

1 CIVIL AERODROMES

1.1 CONDITIONS OF AVAILABILITY

Civil aircraft are not permitted to land at any **aerodromes** not listed in this VFR Manual except in an emergency case.

Restrictions of use can be ordered temporarily for aerodromes where certain conditions are not fulfilled, e.g. reduced rescue and fire fighting services or restricted radio communications. Consult NOTAM.

Any aircraft arriving from or departing for abroad must use an aerodrome open to international traffic. Emergency landings are reserved.

REF: AIP AD 1.3

Airport operating hours are guaranteed. In the case of private airfields, operating hours should be requested when filing the flight plan.

2 CUSTOMS EXPERTISE OF AERODROMES

2.1 Airports

Swiss aerodromes open to public traffic are referred to as airports and have categories A, B or C customs expertise in accordance with Swiss law.

REF: AIP AD 1.3

Map AGA 1-0-APP 1

2.2 **Basel (LFSB): visual flights during the day with aircraft registered in Switzerland to Swiss territory and vice versa.**

Visual flights during the day with aircraft registered in Switzerland from Basle-Mulhouse Airport to Swiss territory and vice versa are considered as flights within Swiss airspace. The submission of a flight plan is not necessary.

Aircraft commanders are obliged to consult the applicable French and Swiss aeronautical information, including the relevant aviation meteorological information, and to follow the applicable aviation regulations in the respective country.

2.3 **Aerodromes with restricted customs expertise**

These are national aerodromes conforming to customs category D in accordance with Swiss law. Although the use of private airfields and national aerodromes is not generally approved for cross-border flights, the competent customs office may authorise cross-border flights, at listed aerodromes, from and to another Schengen State subject to the following conditions:

1. Authorised goods:
 - a) the equipment on the aircraft;
 - b) personal effects of the passengers and crew;
 - c) ready-to-eat foodstuffs and non-alcoholic beverages for ordinary consumption by persons on board;
 - d) tobacco products and alcoholic drinks up to the duty-free allowance, and other goods not exceeding the duty-free allowance.
2. The aircraft is not subject to any customs processing (temporary clearance without customs documents).
3. It is not refuelled free of duties.
4. Passport control is ensured by the competent authority.

Any additional information may be requested from the manager of the aerodrome or the competent customs office.

REF: AIP AD 1.3

Map VFR AGA 1-0-APP 1

AD INFO, § 9

<https://www.bazg.admin.ch/bazg/en/home.html> → Customs-declaration/Declaration-private-individuals / Cross-border flights

2.4 **Aerodromes without customs expertise**

The use of airfields (aerodromes not mentioned in 2.1 and 2.2) for cross border traffic is not authorised. In exceptional cases, aerodromes may request authorisation from the Regional Customs Directorate (individual authorisation) or the Directorate General of Customs (general authorisation).

REF: AIP AD 1.3

Map VFR AGA 1-0-APP 1

AD INFO, § 9

<https://www.bazg.admin.ch/bazg/en/home.html> → Customs-declaration/Declaration-private-individuals / Cross-border flights

3 **SUPPLEMENTARY REGULATIONS**

3.1 **Aerodrome Lighting**

The aerodrome operator decides when the aerodrome lighting shall be switched on for take-off and landing of aircraft.

The aerodrome lighting shall be operated when its use is required for the safety of air traffic during the hours of darkness or during the day in conditions of poor visibility, or when requested by an aircraft crew.

3.2 **VFR flights by night (NVFR)**

NVFR flights can be operated only at, from or to aerodromes equipped for this purpose and agreed by the Federal Office of Civil Aviation (FOCA) → **AD INFO**.

This restriction does not apply to search and rescue flights, to police, training, or urgent transport flights, operated by helicopter, nor to balloon ascents.

For the implementation of **NVFR flights pursuant to article 27 ORA / Rules of the Air**, it is further required that the local Operating Rules be complied with.

3.3 **Visual Aids**

The visual aids must include the following elements as a minimum:

- a) Lighting:
 - White runway edge lights/green threshold lights/red runway lights;
 - Red obstacle lights.
- b) Signalling devices: signalling lamp.
- c) Illuminated wind direction indicator (WDI). For the operation of NVFR flights pursuant to article 27 ORA/Rules of the air, it is further required that the local Operating Regulations be complied with.

For night flights, visibility must be at least 8 km, and the horizontal distance from the clouds at least 1.5 km, and the vertical distance from the clouds at least 300 m.

3.4 **Cross-country flights by night**

At the aerodrome of departure the lighting may be turned off at the earliest 15 minutes after take-off. At the destination aerodrome, it shall be brought into operation at the latest 15 minutes before the expected landing time.



skyguide, CH-8602 Wangen bei Dübendorf

THIS PAGE INTENTIONALLY LEFT BLANK

1. LIST OF WGS84 COORD OF AERODROME REFERENCE POINTS (ARP) AND THRESHOLDS (THR) OF IFR RWY
1. LISTE VON WGS84-KOORDINATEN DES FLUGPLATZBEZUGSPUNKTES (ARP) UND DER SCHWELLEN (THR) DER IFR RWY
1. LISTE DES COORD WGS84 DES POINTS DE RÉFÉRENCE (ARP) ET SEUILS (THR) D'AÉRODROME DE L'IFR RWY
1. LISTA DI COORD WGS84 DI PUNTI DI RIFERIMENTO AERODROMO (ARP) E SOGLIE (THR) DI IFR RWY

Aerodrome	ARP		THR of IFR RWY		
Aarau Kantonsspital (HEL)	47 23 18 N	008 03 32 E	NIL		
Alpnach (MIL)	46 56 38 N	008 17 03 E	NIL		
Ambri	46 30 45 N	008 41 36 E	NIL		
Amlikon	47 34 27 N	009 02 51 E	NIL		
Bad Ragaz	47 00 54 N	009 28 55 E	NIL		
Basel Universitätsspital (HEL)	47 33 40 N	007 35 04 E	NIL		
Balzers (HEL)	47 04 05 N	009 28 52 E	NIL		
Bellechasse	46 58 46 N	007 07 57 E	NIL		
Bern-Belp	46 54 44 N	007 29 57 E	THR 14 THR 32	46 55 04.58 N 46 54 26.60 N	007 29 32.98 E 007 30 19.30 E
Bern Inselspital (HEL)	46 56 54 N	007 25 27 E	NIL		
Bern-Sand (HEL)	47 00 41 N	007 30 08 E	NIL		
Bex	46 15 30 N	006 59 11 E	NIL		
Biel-Kappelen	47 05 21 N	007 17 24 E	NIL		
Bière (HEL)	46 31 42 N	006 20 25 E	NIL		
Birrfeld	47 26 36 N	008 14 02 E	NIL		
Blumental (winter AD)	46 33 47 N	007 52 27 E	NIL		
Bressaucourt	47 23 33 N	007 01 44 E	NIL		
Buochs	46 58 28 N	008 23 49 E	NIL		
Bure (HEL)	47 27 18 N	007 00 57 E	NIL		
Buttwil	47 15 53 N	008 18 09 E	NIL		
Chur Kantonsspital Graubünden (HEL)	46 51 51 N	009 32 20 E	NIL		
Collombey-Muraz (HEL)	46 16 07 N	006 57 35 E	NIL		
Courtelary	47 11 00 N	007 05 27 E	NIL		
Davos Regionalspital (HEL)	46 47 15 N	009 48 51 E	NIL		
Delémont (Hôpital de Delémont) (HEL)	47 22 08 N	007 20 25 E	NIL		
Dittingen	47 26 20 N	007 29 29 E	NIL		
Dübendorf (MIL)	47 23 54 N	008 38 54 E	THR 11 THR 29	47 24 05.84 N 47 23 43.10 N	008 38 01.40 E 008 39 45.84 E

Aerodrome	ARP		THR of IFR RWY		
Ecuvillens	46 45 19 N	007 04 33 E	NIL		
Emmen (MIL)	47 05 32 N	008 18 17 E	THR 04 THR 22	47 05 03.47 N 47 06 00.05 N	008 17 45.48 E 008 18 49.46 E
Erstfeld (HEL)	46 50 01 N	008 38 20 E	NIL		
Frauenfeld (MIL)	47 34 13 N	008 53 27 E	NIL		
Fricktal-Schupfart	47 30 32 N	007 57 00 E	NIL		
Gampel (HEL)	46 18 36 N	007 43 30 E	NIL		
Genève	46 14 18 N	006 06 34 E	THR 04 THR 22	46 13 40.23 N 46 15 01.30 N	006 05 38.24 E 006 07 37.22 E
Genève HUG (HEL)	46 11 35 N	006 08 54 E	NIL		
Gossau (HEL)	47 24 20 N	009 17 25 E	NIL		
Gösgen (HEL)	47 21 55 N	007 57 57 E	NIL		
Grenchen	47 10 53 N	007 24 59 E	THR 06 THR 24	47 10 48.99 N 47 11 00.54 N	007 24 45.88 E 007 25 23.51 E
Gruyères	46 35 39 N	007 05 40 E	NIL		
Gstaad-Inn (winter HEL)	46 25 45 N	007 16 15 E	NIL		
Gsteigwiler (HEL)	46 38 53 N	007 52 39 E	NIL		
Haltikon (HEL)	47 05 25 N	008 24 53 E	NIL		
Hasenstrick	47 16 48 N	008 52 55 E	NIL		
Hausen am Albis	47 14 20 N	008 30 56 E	NIL		
Holziken (HEL)	47 18 51 N	008 01 34 E	NIL		
Interlaken (HEL)	46 40 15 N	007 52 31 E	NIL		
Interlaken Spital (HEL)	46 40 51 N	007 50 39 E	NIL		
Kägiswil	46 54 26 N	008 15 11 E	NIL		
La Côte	46 24 23 N	006 15 29 E	NIL		
Langenthal	47 10 59 N	007 44 30 E	NIL		
Lauberhorn (winter AD)	46 35 02 N	007 57 00 E	NIL		
Lausanne-La Blécherette	46 32 43 N	006 37 00 E	NIL		
Lausanne CHUV (HEL)	46 31 28 N	006 38 27 E	NIL		
Lauterbrunnen (HEL)	46 35 08 N	007 54 48 E	NIL		
Les Eplatures	47 05 03 N	006 47 37 E	THR 05 THR 23	47 04 52.88 N 47 05 11.02 N	006 47 15.95 E 006 47 52.88 E
Leysin (HEL)	46 20 29 N	007 01 27 E	NIL		
Locarno	46 09 39 N	008 52 43 E	NIL		

Aerodrome	ARP		THR of IFR RWY		
Lodrino	46 17 39 N	008 59 34 E	NIL		
Lommis	47 31 29 N	009 00 13 E	NIL		
Lugano	46 00 13 N	008 54 37 E	THR 01 THR 19	45 59 58.08 N 46 00 29.59 N	008 54 29.60 E 008 54 45.04 E
Luzern-Beromünster	47 11 24 N	008 12 17 E	NIL		
Luzern Kantonsspital (HEL)	47 03 33 N	008 17 49 E	NIL		
Meiringen (MIL)	46 44 32 N	008 06 32 E	THR 10 THR 28	46 44 36.04 N 46 44 28.87 N	008 05 46.61 E 008 07 17.21 E
Mollis	47 04 45 N	009 03 54 E	NIL		
Montricher	46 35 25 N	006 24 02 E	NIL		
Môtiers	46 55 00 N	006 36 54 E	NIL		
Münster	46 28 49 N	008 15 48 E	NIL		
Männlichen (winter AD)	46 36 38 N	007 56 30 E	NIL		
Neuchâtel	46 57 27 N	006 51 53 E	NIL		
Notwil SPZ Schweizer Paraplegiker-Zentrum (HEL)	47 08 31 N	008 07 49 E	NIL		
Olten	47 20 29 N	007 53 04 E	NIL		
Payerne (MIL, CIV)	46 50 33 N	006 54 49 E	THR 05 THR 23	46 50 07.24 N 46 51 03.11 N	006 54 07.75 E 006 55 39.01 E
Pfaffnau (HEL)	47 14 07 N	007 54 36 E	NIL		
Porrentruy (Hôpital du Jura) (HEL)	47 25 09 N	007 03 25 E	NIL		
Raron	46 18 16 N	007 49 18 E	NIL		
Raron (HEL)	46 18 05 N	007 49 58 E	NIL		
Reichenbach	46 36 49 N	007 40 40 E	NIL		
Rennaz (HEL)	46 22 40 N	006 55 24 E	NIL		
Rennaz (Hôpital Riviera-Chablais) (HEL)	46 22 49 N	006 55 16 E	NIL		
Saanen	46 29 11 N	007 14 55 E	NIL		
Samedan	46 32 04 N	009 53 02 E	THR 03 THR 21	46 31 38.32 N 46 32 26.26 N	009 52 41.95 E 009 53 20.84 E
San Vittore (HEL)	46 13 56 N	009 05 23 E	NIL		
St. Gallen-Altenrhein	47 29 06 N	009 33 43 E	THR 10 THR 28	47 29 09.57 N 47 29 03.04 N	009 33 05.74 E 009 34 08.31 E
St. Gallen-Breitfeld (MIL)	47 24 38 N	009 18 00 E	NIL		

Aerodrome	ARP		THR of IFR RWY		
St. Gallen Kantonsspital (HEL)	47 25 51 N	009 23 13 E	NIL		
St. Gallen Ostschweizer Kinderspital (HEL)	47 25 46 N	009 23 40 E	NIL		
St. Moritz (winter HEL)	46 28 44 N	009 49 27 E	NIL		
Schaffhausen	47 41 25 N	008 31 36 E	NIL		
Schattenhalb (HEL)	46 42 45 N	008 12 09 E	NIL		
Schindellegi (HEL)	47 10 13 N	008 42 51 E	NIL		
Schänis	47 10 18 N	009 02 22 E	NIL		
Schwarzsee (Winter AD)	46 39 58 N	007 16 59 E	NIL		
Sion	46 13 09 N	007 19 37 E	THR 07 THR 25	46 13 00.73 N 46 13 18.56 N	007 18 55.42 E 007 20 19.05 E
Sion (Hôpital de Sion) (HEL)	46 14 04 N	007 23 14 E	NIL		
Sitterdorf	47 30 32 N	009 15 46 E	NIL		
Speck-Fehraltorf	47 22 35 N	008 45 27 E	NIL		
Tavanas (HEL)	46 45 38 N	009 05 34 E	NIL		
Thun	46 45 23 N	007 36 02 E	NIL		
Triengen	47 13 36 N	008 04 41 E	NIL		
Trogen (HEL)	47 24 32 N	009 28 23 E	NIL		
Untervaz (HEL)	46 54 44 N	009 33 04 E	NIL		
Wangen-Lachen	47 12 17 N	008 52 03 E	NIL		
Winterthur	47 30 54 N	008 46 19 E	NIL		
Winterthur Kantonsspital (HEL)	47 30 26 N	008 43 42 E	NIL		
Würenlingen (HEL)	47 32 14 N	008 14 41 E	NIL		
Yverdon-les-Bains	46 45 43 N	006 36 48 E	NIL		
Zermatt (HEL)	46 01 46 N	007 45 12 E	NIL		
Zürich	47 27 29 N	008 32 53 E	THR 14 THR 32 THR 16 THR 34 THR 10 THR 28	47 28 55.53 N 47 27 40.65 N 47 28 32.57 N 47 26 57.39 N 47 27 32.18 N 47 27 23.76 N	008 32 09.87 E 008 33 52.06 E 008 32 09.37 E 008 33 14.91 E 008 32 14.93 E 008 34 13.63 E
Zürich Kinderspital (HEL)	47 21 06 N	008 34 17 E	NIL		
Zürich Universitätsspital (HEL)	47 22 37 N	008 33 04 E	NIL		
Zweisimmen	46 33 06 N	007 22 52 E	NIL		

1 NOTES ON AD INFO**1.1 Fuel and Ground Services**

→ AD INFO, § 8

PF = Piston engined aircraft fuel (AVGAS 100LL)

TF = Turbine aircraft fuel (KER, JET A1)

S1 = Hangarage

S2 = Hangarage and minor aircraft repairs

S3 = Hangarage, minor aircraft repairs and minor engine repairs

S4 = Hangarage, major aircraft repairs and minor engine repairs

S5 = Hangarage, major aircraft repairs and major engine repairs

1.2 Fire-fighting equipment

The minimum fire-fighting equipment required at the aerodrome depends upon the dimensions of the aircraft whereby the following ICAO classification applies.

Category	Aeroplane overall length (m)	MAX fuselage width (m)
1	- 9	2
2	9-12	2
3	12-18	3
4	18-24	4
5	24-28	4
6	28-39	5
7	39-49	5
8	49-61	7
9	61-76	7
10	76-90	8

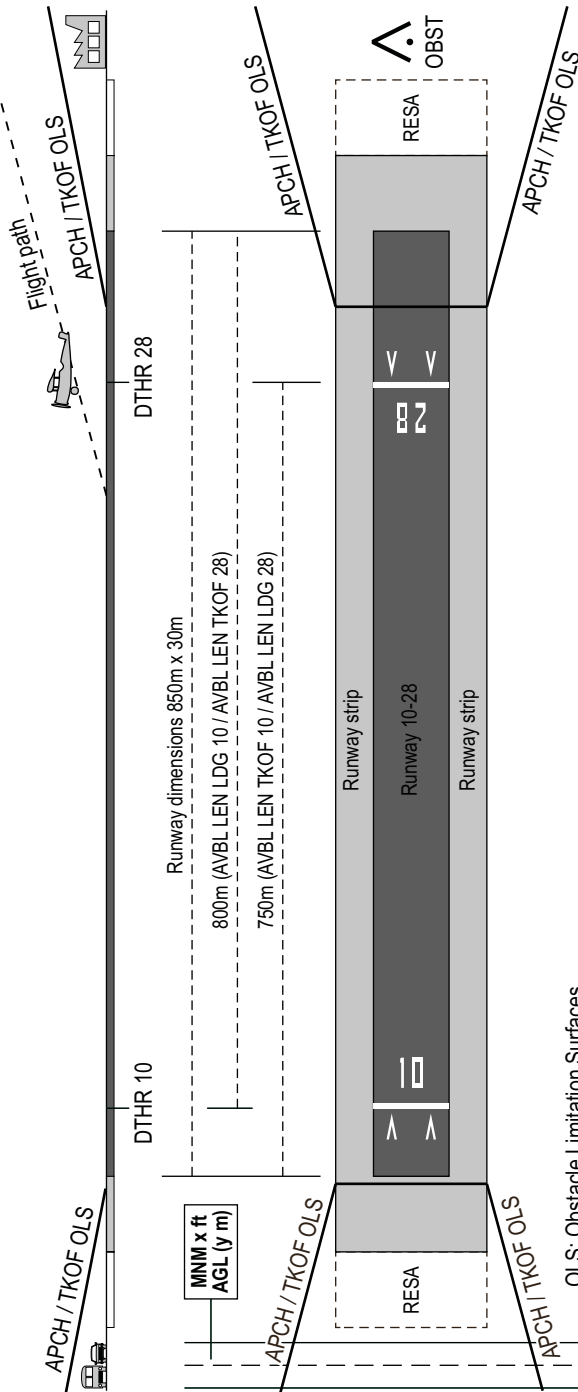
AD INFO, § 8 provides information about which fire-fighting resources are available at the aerodrome. The information includes the category corresponding to the available resources and the overall length of the aeroplane.

At some aerodromes fire-fighting resources are only available if previously requested (O/R), due to lack of personnel.

When no information is given, only hand-held and small fire extinguishers may be available at the aerodrome.

3.3 Example / Esempio / Beispiel / Exemple

Runway with both thresholds displaced - Longitudinal cross section and situation / Pista con le due soglie spostate - Sezione longitudinale e situazione
 Piste mit zwei versetzten Schwellen - Längsschnitt und Situation / Piste avec deux seuils décalés - Coupe longitudinale et situation



NR	RWY BRG TRUE/MAG	RWY Dimension [m]	AVBL LEN LDG [m]	AVBL LEN TKOF [m]
10	101/099	850 x 30	800	750
28	281/279		750	800

- OLS: Obstacle Limitation Surfaces
- OLS: Superficie di limitazione degli ostacoli
- OLS: Hindernisbegrenzungsflächen
- OLS: Surfaces de limitation d'obstacles
- RESA: Runway End Safety Area
- RESA: Area di sicurezza di fine pista
- RESA: Pistenende-Sicherheitsfläche
- RESA: Aire de sécurité d'extrémité de piste

Intentionally Left Blank

Lärmabhängige Gebührenklassen für Luftfahrzeuge ohne spezielle Schalldämpfung**Classes de tarif en fonction du bruit pour les aéronefs sans atténuateur spécial de bruit****Noise dependent tariff classes for aircraft without special sound-proofing****Classificazione tariffaria dipendente dal rumore per aeromobili sprovvisti di un apposito riduttore di emissione fonica**

ICAO Code	Aircraft manufacturer	Aircraft type	MTOW in kg	Engine manufacturer	Engine type	Propeller manufacturer	Propeller type	Noise class
F260	Aermacchi	F260	1102	Lycoming	O-540-E4A5	Hartzell	HC-C2YK-1BF/F8477-8R	C
F260	Aermacchi	F260C	1102	Lycoming	O-540-E4A5	Hartzell	HC-C2YK-1BF/F8477-8R	B
F260	Aermacchi	F260C	1102	Lycoming	O-540-E4A5	MT	MTV-9-B/188-50	D
S208	Aermacchi	S208	1350	Lycoming	O-540-E4A5	Hartzell	HC-C2YK-1B/F8477-8R	C
P220	AERO SP	AT-3 R100	582	Rotax	912 S2	Elprop	3-1-1P	D
CH7A	Am. Champ.	7AC	554	Continental	C-90-8F	Sensenich	M76AK-2-46	D
CH7B	Am. Champ.	7GCAA	794	Lycoming	O-320-B2B	Sensenich	74DM658-0-56	C
CH7B	Am. Champ.	7GCBC	818	Superior	O-360-A3A2	Sensenich	76EM858-0-58	C
BL8	Am. Champ.	8KCAB	816	Lycoming	AEIO-360-H1A	Hartzell	C2YR-4CF/FC7666A-4	B
BL8	Am. Champ.	8KCAB	885	Lycoming	AEIO-360-H1A	MT	MTV-9-B-C/C188-18b	A
CP10	Apex	CAP 10 B	830	Lycoming	AEIO-360-B2F	Hoffmann	HO-29-HM-180-170	B
A210	Aquila	AT01	750	Rotax	912 S3	MT	MTV-21-A/175-05	D
AU55	Auster	V	840	Lycoming	O-290-D2	McCaughey	1A170/GM7450	A
PUP	Beagle	B121	873	Lycoming	O-320-A2B	Sensenich	M74DM5-0-60	B
B14A	Binder	14-13-3	975	Franklin	6A4-150-B3	McCaughey	1A170/DM7456	B
CP30	Binder	CP301S	680	Continental	C-90-12F	McCaughey	1B90/CM7150	C
CP30	Binder	CP301S SMAR.	680	Continental	O-200-A	McCaughey	1A100/MCM6758	B
AS25	Binder	ASH 25 EB 28	810	Solo	2 625 02	Technoflug	KS-1G-160-R-120	D
KL07	Boelkow	207	1200	Lycoming	O-360-A1A	Hartzell	HC-922K-8D/8447-12A	D
JUNR	Boelkow	BO-208C „JUN“	630	Teledyne	O-200-A	McCaughey	1A100/MCM6758	C
JUNR	Boelkow	BO-208C „JUN“	630	RR	O-200-A	McCaughey	1A100/MCM6955	C
PILO	Borowski	PICCOLO	297	Solo	2350B	Borowski	KS-118-3-5	D
BN2B	Britten Norm.	BN2B-20 Islander	2994	Lycoming	IO-540-K1B5	Hartzell	HC-C2YK-2CF/FC8477-6	C
BU33	Bücker	133	640	Bramo	SH-14A4	K+W	D220/S148	D
CE43	CERVA	CERVA CE 43	1460	Lycoming	IO-540-C4B5	Hartzell	HC-C2YK-1BF/F8477-7	C
C140	Cessna	140	660	Lycoming	O-235-K2A	Hoffmann	HO-14-178-115	A
C140	Cessna	140	660	Continental	C-85-12F	McCaughey	1A90/CF7150	A
C140	Cessna	140	660	Lycoming	O-235-K2A	Sensenich	72CK-0-56	A
C140	Cessna	140	660	Cont./RR	O-200-A	Sensenich	M69CK52	A
C140	Cessna	140	660	Continental	C-90-12F	Sensenich	M76-AK	C
C140	Cessna	140 A	680	Continental	C-90-12F	McCaughey	1B90/CM7146	C
C150	Cessna	150 D	799	Lycoming	O-360-A4A	Hoffmann	HO-4/27HM-170 125	D

ICAO Code	Aircraft manufacturer	Aircraft type	MTOW in kg	Engine manufacturer	Engine type	Propeller manufacturer	Propeller type	Noise class
C150	Cessna	150 D	726	Cont./RR	O-200-A	McCaughey	1A100/MCM 6950	C
C150	Cessna	150 D	726	Cont./RR	O-200-A	Sensenich	69CK-0-52	C
C152	Cessna	152	758	Lycoming	O-235-L2C	McCaughey	1A103/TCM6958	D
C170	Cessna	170 A	998	Lycoming	O-340-A1A	Hartzell	HC-A2XL-1	B
C170	Cessna	170 B	998	Lycoming	O-360-A1A	Hartzell	HC-C2YK-1	B
C170	Cessna	170,-A,-B	1000	Continental	C-145-2	McCaughey	1A170/DM7653	B
C172	Cessna	172	998	Continental	O-300-A	McCaughey	1A170/DM7653	C
C172	Cessna	172	1043	Franklin	6A-335-B	McCaughey	2A31C21/845-8	A
C172	Cessna	172 N	1043	Lycoming	O-320-H2AD	McCaughey	1C160/DTM7557	C
C172	Cessna	172 P	1157	Lycoming	O-360-A4M	Sensenich	76EM8SPY-0-60	C
C72R	Cessna	172 RG	1202	Lycoming	O-360-F1A6	McCaughey	B2D34C220/80VHA-3.5	C
C72R	Cessna	172 RG	1198	Lycoming	O-360-F1A6	MT	MTV-12-B/183-17	C
C175	Cessna	175	1066	Lycoming	O-360-A1D	Hartzell	HC-C2YK-1	C
C175	Cessna	175	1066	Franklin	6A-335-B	McCaughey	2A31C21/845-6	A
C175	Cessna	175	1066	Franklin	6A-350-C2	McCaughey	2A31C21/845-6	A
C175	Cessna	175	1066	Franklin	6A-335-B	McCaughey	2A31C21/845-8	C
C175	Cessna	175 B	1066	Lycoming	O-360-A1D	McCaughey	2D36C14/78KM-4	C
C177	Cessna	177 B	1134	Lycoming	O-360-A1F6	McCaughey	2D34C202/82PA-6	C
C77R	Cessna	177 RG	1270	Lycoming	IO-360A1B6D	McCaughey	B2D34C207/78TA	B
C77R	Cessna	177 RG	1270	Lycoming	IO-360A1B6D	McCaughey	C3D36C415/82NGA-8	D
C180	Cessna	180	1157	Continental	O-470-J	McCaughey	2A34C203/90DCA-8	C
C182	Cessna	182...-P	1338	Continental	O-470-R	McCaughey	D3A32C411C/G82NDA-4	B
C182	Cessna	182E	1270	Continental	O-470-R	McCaughey	2A34C50	C
C182	Cessna	182F	1270	Continental	O-470-R	McCaughey	2A34C50	C
C182	Cessna	182F	1270	Continental	O-470-R	McCaughey	2A34C66-(/)/-90AT-8	C
C182	Cessna	182H	1270	Continental	O-470-R	McCaughey	2A34C66/90AT-8	C
C182	Cessna	182H	1338	Continental	O-470-U	McCaughey	C2A34C204/90DCB-8	D
C182	Cessna	182H	1270	Continental	O-470-U	McCaughey	C2A34C204/90DCB-8	D
C182	Cessna	182L	1270	Continental	O-470-R	McCaughey	2A34C66/90AT-8	C
C182	Cessna	182M	1270	Continental	O-470-R	McCaughey	2A34C203/90DCA-8	C
C182	Cessna	182P	1338	Continental	O-470-S	McCaughey	2A34C203/90DCA-8	B
C182	Cessna	182P	1338	Continental	O-470-R	McCaughey	2A34C203/90DCA-8	B
C182	Cessna	182Q	1338	Continental	IO-550-F	McCaughey	D3A34C401	D
C182	Cessna	182Q,R	1406	Continental	O-470-U	McCaughey	C2A34C204/90DCB-8	D
C182	Cessna	182S	1406	Lycoming	IO-540-AB1A5	McCaughey	B2D34C235/90DKB-8	D
C208	Cessna	208	3629	P&W	PT6A-114A	McCaughey	3GFR34C703-(/)-()106GA-0	D
C208	Cessna	208	3629	P&W	PT6A-114A	MT	MTV-16-1-E-C-F-R(P)/CFR250-55	D
C208	Cessna	208B	3969	P&W	PT6A-114A	McCaughey	3GFR34C703/106GA-0	C
C210	Cessna	210 F	1498	Continental	IO-520-A	McCaughey	D3A32C77/82NK-2	C
C210	Cessna	210 L	1724	Continental	IO-520-L	Hartzell	PHC-3YF-1RF/F7691	B
C210	Cessna	210 L	1724	Continental	IO-520-L	McCaughey	D3A32C88/82NC-2	B
C310	Cessna	310 F	2191	Continental	IO-470-D	McCaughey	3AF32C528/B2NEA-4	C
C310	Cessna	310 N	2359	Continental	IO-470-V	McCaughey	D3AF32C80	B
C310	Cessna	310 Q	2404	Continental	IO-470-VO	McCaughey	D3AF32C87/82NC-4	B
C320	Cessna	320 C	2360	Continental	TSIO-470-D	McCaughey	D2AF34C54	B

ICAO Code	Aircraft manufacturer	Aircraft type	MTOW in kg	Engine manufacturer	Engine type	Propeller manufacturer	Propeller type	Noise class
C335	Cessna	335	2717	Continental	TSIO-520-EB	McCaughey	3AF32C87/82NC-5.5	C
C340	Cessna	340	2710	Continental	TSIO-520-K	McCaughey	3AF32C87/82NC-4	C
C340	Cessna	340 A	2717	Continental	TSIO-520-NB	Hartzell	PHC-C3YF-2UF/FC7663D-2Q	C
C340	Cessna	340 A	2853	Continental	TSIO-520-NB	MT	MTV-14-D-C-F/CF188-30g	C
C340	Cessna	340,-A	2717	Continental	TSIO-520-N	McCaughey	3AF32C93/82NC-6.5	C
C402	Cessna	402 B	2858	Continental	TSIO-520-E	McCaughey	3AF32C87/82NC-5.5	C
C402	Cessna	402 B	2858	Continental	TSIO-520-EB	McCaughey	3AF32C87-NR/(S)-82NC-5.5	C
C414	Cessna	414	2880	Teledyne	TSIO-520-NB	MT	MTV-14-D-C-F/CF188-30g	D
C421	Cessna	421C	3429	Continental	GTSIO-520-L	McCaughey	3FF32C501/90UMB-0	C
C421	Cessna	421C	3379	Continental	GTSIO-520-N	McCaughey	3FF32C501/90UMB-0	D
C421	Cessna	421C	3379	Continental	GTSIO-520-L	McCaughey	3FF32C501/90UMB-0	D
C425	Cessna	425	3900	P&W	PT6A-112	McCaughey	4HFR34C762/94LMA-4	D
C185	Cessna	A 185 F	1520	Continental	IO-520-D	McCaughey	D2A34C58	B
C185	Cessna	A 185 F	1519	Continental	IO-520-D	McCaughey	D3A34C403/80VA-0	C
C150	Cessna	F 150 F	728	Cont./RR	O-200-A	McCaughey	1A101/GGM6948	C
C150	Cessna	F 150 G	728	Cont./RR	O-200-A	McCaughey	1A101/GGM6948	C
C150	Cessna	F 150 H	726	Cont./RR	O-200-A	McCaughey	1A101/DCM6948	C
C150	Cessna	F 150 J	726	RR	O-240-A	McCaughey	1A135/BRM7150	B
C150	Cessna	F 150 K	726	Lycoming	O-320-E2A	Sensenich	74DM655-0-58	C
C150	Cessna	F 150 L	726	Cont./RR	O-200-A	McCaughey	1A101/GGM6948	C
C150	Cessna	F 150 M	726	Cont./RR	O-200-A	McCaughey	1A102/OCM6948	C
C152	Cessna	F 152	758	Lycoming	O-235-L2C	McCaughey	1A103/TCM6958	D
C172	Cessna	F 172 D,...K	1043	Continental	O-300-C/-D	McCaughey	1C172/EM7653	D
C172	Cessna	F 172 E	1043	Continental	O-300-D	McCaughey	1C172/EM7653	B
C172	Cessna	F 172 H	1043	Lycoming	O-360-A1A	Hartzell	HC-C2YK-1B/7666A-2	D
C172	Cessna	F 172 K	1157	Lycoming	O-360-A4M	Sensenich	76EM8514-0-60	C
C172	Cessna	F 172 M	1157	Lycoming	O-360-A4A	Sensenich	76EM8514-0-60	C
C172	Cessna	F 172 M	1157	Lycoming	O-360-A4M	Sensenich	76EM8514-0-60	C
C172	Cessna	F 172 N	1043	Lycoming	O-320-H2AD	McCaughey	1C160/DTM7557	C
C172	Cessna	F 172 P	1089	Lycoming	O-320-D2J	McCaughey	1C160/DTM7557	B
C77R	Cessna	F 177 RG	1270	Lycoming	IO-360-A1B6	McCaughey	B2D34C207/78TCA	B
C77R	Cessna	F 177 RG	1270	Lycoming	IO-360-A1B6	McCaughey	C3D36C415/82NGA-8	D
C182	Cessna	F 182 Q	1338	Continental	O-470-U	McCaughey	C2A34C204	D
C182	Cessna	F 182 R	1406	Continental	O-470-U	McCaughey	C2A34C204/90DCB-8	D
C152	Cessna	FA 152	758	Lycoming	O-235-L2C	McCaughey	1A103/TCM6958	D
C152	Cessna	FA 152	758	Lycoming	O-235-L2C	Sensenich	72CK56-0-56	D
C172	Cessna	FR 172 K	1157	Continental	IO-360-K	McCaughey	2A34C203/90DCA-14	B
C182	Cessna	FR 182	1406	Lycoming	O-540-J3C5D	McCaughey	B2D34C214/90DHB-8	D
C182	Cessna	FR 182	1406	Lycoming	O-540-J3C5D	McCaughey	B2D34C218/90DHB-8	D
C150	Cessna	FRA 150 L	750	Lycoming	O-320-A3B	McCaughey	1C172/TM7453	C
C150	Cessna	FRA 150 L	750	Lycoming	O-320-E2A	Sensenich	74DM655-0-58	C
C10T	Cessna	P 210 N	1814	Allison	DDA 250-B17F	Hartzell	HC-B3TF-7A/T921NK-2	D
C210	Cessna	P 210 N	1814	Continental	TSIO-520-P	Hartzell	PHC-J3YF-1RF/7663D-2Q	D
C210	Cessna	P 210 N	1814	Continental	TSIO-520-P	MT	MTV-14-D/195-30a	A
C210	Cessna	P 210 N	1814	Continental	TSIO-520-P	MT	MTV-14-D/195-30b	D

ICAO Code	Aircraft manufacturer	Aircraft type	MTOW in kg	Engine manufacturer	Engine type	Propeller manufacturer	Propeller type	Noise class
C210	Cessna	P 210 R	1860	Continental	TSIO-520-CE	MT	MTV-14-D/195-30a	C
C210	Cessna	P 210 R	1860	Continental	TSIO-520-CE	MT	MTV-14-D/195-30b	D
C82R	Cessna	R 182	1406	Lycoming	O-540-J3C5D	McCaughey	B3D32C407/82NDA-3	D
C182	Cessna	RA F182 Q	1338	Continental	O-470-U	Hartzell	PHC-C3YF-1RF/F7663R	D
C210	Cessna	T 210 L	1724	Continental	TSIO-520-H	McCaughey	D3A32C88/82NC-2	D
C210	Cessna	T 210 N	1814	Continental	TSIO-520-R	Hartzell	PHC-J3YF-1RF/F7663D-2Q	C
C210	Cessna	T 210 N	1814	Continental	TSIO-520-R	McCaughey	D3A34C402/900FA-10	B
C303	Cessna	T 303	2336	Continental	(L)TSIO-520-AE	McCaughey	3AF32C506-(/)/J82NEB-8	D
C310	Cessna	T 310 P	2450	Continental	TSIO-520-B	McCaughey	D2AF34C71	C
C310	Cessna	T 310 R	2495	Continental	TSIO-520-BB	McCaughey	3AF32C504/82NEA-4	C
C310	Cessna	T 310 R	2495	Continental	TSIO-520-B	McCaughey	3AF32C87/82NC-4	C
C182	Cessna	T182T	1406	Lycoming	TIO-540-AK1A	McCaughey	B3D36C442/80VSB-1	D
C206	Cessna	T206H	1633	Lycoming	TIO-540-AJ1A	McCaughey	B3D36C432/H-80VSA-1	D
C182	Cessna	TR 182	1406	Lycoming	O-540-L3C5D	McCaughey	B2D34C217/90DHB-8	D
C182	Cessna	TR 182	1406	Lycoming	O-540-L3C5D	McCaughey	B3D32C407/82NDA-3	D
C206	Cessna	U206F	1633	Thielert	Cent. 4.0 BE 221	MT	MTV-9-D/210-58	D
C206	Cessna	U206G	1633	Continental	IO-520-F	McCaughey	D3A34C404/80VA-0	B
SR20	Cirrus	SR20	1360	Continental	IO-360-E5	Hartzell	PHC-J3YF-1MF/F7392-1	C
SR22	Cirrus	SR22	1542	Continental	IO-550-N	Hartzell	PHC-J3Y(1)F-1N/N7605(B)	C
P06T	Costr.Aero	P2006T	1180	BRP - Rot.	912 S3	MT	MTV-21-A-C-F/CF178-05	D
P06T	Costr.Aero	P2006T	1230	BRP - Rot.	912 S3	MT	MTV-21-A-C-F/CF178-05	D
ECHO	Costr.Aero	P2008-JC	630	Rotax	912 S2	GT	GT-2/173/VRR-FW101 SRTC	C
AC11	CPAC, Inc.	112	1200	Lycoming	IO-360-C1D6	Hartzell	HC-E3YR-1RF/F7392	C
AC11	CPAC, Inc.	112, -A	1202	Lycoming	IO-360-C1D6	Hartzell	HC-E2YR-1BF/F7666A	C
AC11	CPAC, Inc.	C 114	1425	Lycoming	IO-540-T4A5D	Hartzell	HC-C2YR-1BF/F8467-7R	C
AC11	CPAC, Inc.	C 114 A,-B	1474	Lycoming	IO-540-T4B5	McCaughey	B3D32C419-(/)/J82NHA-5	C
	Czech Sport	PS-28 Cruiser	600	Rotax	912 ULS2	Woodcomp	Klassic 170/3/R	D
DH60	De Havilland	DH 60 C	795	Gipsy	MAJOR I	De Havilland	5234/HX8	D
DH82	De Havilland	DH 82 A	828	Gipsy	MAJOR 10MK2	Hoffmann	HO21-198B140	D
DH82	De Havilland	DH 82 A (N.Z.)	828	Gipsy	MAJOR 1C	Hoffmann	HO 21-HM198B 140L	D
DH82	De Havilland	DH-82A	839	Gipsy	MAJOR I	DRG Prop	67104	C
DHC1	De Havilland	DHC 1MK 22	1000	Gipsy	MAJOR 10MK2	Fairey	A66753	B
DHC1	De Havilland	DHC 1MK 22	952	Gipsy	MAJOR 10MK2	Fairey	FR-A-66 753	C
DHC3	De Havilland	DHC-3	3629	P&W	PT6A-34	Hartzell	B3TN-3DY/T10282	A
DHC6	De Havilland	DHC-6-300	5670	P&W	PT6A-27	Hartzell	HC-D4N-3C/D9290K	D
DHC6	De Havilland	DHC-6-300, 310	5670	P&W	PT6A-27	Hartzell	HC-B3TN-3/D(Y)T10282H(B)+0	B
DHC6	De Havilland	DHC-6-310	5670	P&W	PT6A-27	Hartzell	HC-D4N-3C/D9290K	D
DHC6	De Havilland	DHC-6-400	5670	P&W	PT6A-34	Hartzell	HC-B3TN-3/D(Y)/T10282N*1	A
DG10	DG FZ-Bau	DG-1000 T	750	Solo	2350 C	DG FZ-Bau	DG-P001-1	D
DG10	DG FZ-Bau	DG-1000M	790	Solo	2 625 02i	Binder	BM-G1-160-R-120-1	D
DG40	DG FZ-Bau	DG-400	480	Rotax	505	Hoffmann	HO-11F-128B84	D
DG40	DG FZ-Bau	DG-400 (TM 826/29)	480	Rotax	505	MT	MT 136 R75-1B	D
DG50	DG FZ-Bau	DG-500 M	825	Rotax	535C	MT	MT 158 R 125-1A	D
DG60	DG FZ-Bau	DG-600 M,-18M	525	Rotax	275	MT	140L 92-1B	C
DG80	DG FZ-Bau	DG-800 A	525	Rotax	505	MT	MT 136 R75-1B	D

ICAO Code	Aircraft manufacturer	Aircraft type	MTOW in kg	Engine manufacturer	Engine type	Propeller manufacturer	Propeller type	Noise class
DG80	DG FZ-Bau	DG-800 B	525	Solo	2625	Technoflug	KS-1G-152-R-122	D
DG80	DG FZ-Bau	DG-808 C	600	Solo	2-625-01	Technoflug	KS-1G-152-R-122(-)-B	D
DG80	DG FZ-Bau	DG-808 C	525	Solo	2-625-01	Technoflug	KS-1G-152-R-122(-)-B	D
DG10	DG FZ-Bau	LS10-st	600	Solo	2350	Technoflug	KS-1G-079-L-050-W	-
DA40	Diamond	DA 40	1150	Lycoming	IO-360-M1A	Hartzell	HC-C2YR-1BF/F7495S	D
DA40	Diamond	DA 40	1200	Lycoming	IO-360-M1A	MT	MTV-12-B/180-17()	C
DA40	Diamond	DA 40	1150	Lycoming	IO-360-M1A	MT	MTV-12-B/180-17()	D
DA40	Diamond	DA 40 D	1150	Thielert	TAE 125-01	MT	MTV-6-A/187-129	D
DA40	Diamond	DA 40 D	1150	Thielert	TAE 125-02-99	MT	MTV-6-D/187-129	D
DA42	Diamond	DA 42	1700	Thielert	TAE 125-01	MT	MTV-6-A-C-F/CF187-129	D
DA42	Diamond	DA 42	1785	Thielert	TAE 125-02-99	MT	MTV-6-A-C-F/CF187-129	D
DA42	Diamond	DA 42	1700	Thielert	TAE 125-02-99	MT	MTV-6-A-C-F/CF187-129	D
DA42	Diamond	DA 42	1785	Thielert	TAE 125-01	MT	MTV-6-A-C-F/CF187-129	D
DA42	Diamond	DA 42	1785	Thielert	TAE 125-02-99	MT	MTV-6-A-C-F/CF187-129	D
DA42	Diamond	DA 42 NG	1900	Austro Eng	E4 (E4-B)	MT	MTV-6-R-C-F/CF187-129	D
DA20	Diamond	DA20 A1	730	Rotax	912 F3	Hoffmann	HO-V352F-(1)70FQ	D
DA20	Diamond	DA20 A1	750	Rotax	912 S3	Hoffmann	HO-V352F-170FQ	D
DA20	Diamond	DA20 C1	800	Teledyne	IO-240-B()()	MT	MT 175 R 150-2Ca	D
DA20	Diamond	DA20 C1	750	Teledyne	IO-240-B()()	MT	MT 175 R 150-2Ca	D
DV20	Diamond	DA20-A1	730	Rotax	912 S3	Hoffmann	HO-V352F/C170FQ	D
DV20	Diamond	DV 20	730	Rotax	912 S3	Hoffmann	HO-V352F/C170FQ	D
DIMO	Diamond	HK 36TC	770	Rotax	912 A3	MT	MTV-21-A-C-F/CF175-05	D
DIMO	Diamond	HK 36TC100	770	Rotax	912 S3	MT	MTV-21-A-C-F/CF175-05	D
DIMO	Diamond	HK 36TTC	770	Rotax	914F3	MT	MTV-21-A-C-F/C175-05	D
DIMO	Diamond	HK 36TTS	770	Rotax	914F3	MT	MTV-21-A-C-F/C175-05	D
MCR1	Dyn-Aero	MCR-ULC	472.5	Rotax	914 UL2	Dyn'Aero	MKIHE 1000	D
MCR1	Dyn-Aero	MCR-ULC	472.5	Rotax	914 UL2	Neuform	DR3-56-47-101.6	D
PZ04	EADS PZL	PZL-104 Wilga 35	1300	WSK PZL	Ai-14 RM	WSK PZL	US 122 000	D
C365	Eidg FZ-Werk	C-3605	3700	Lycoming	TS3L7A	Hamilton	53C51-23	D
PK20	Eiriavion	PIK-20E	470	Rotax	505	Hoffmann	HO-11(-)-127-B-87	C
PK20	Eiriavion	PIK-20E	470	Rotax	501	Hoffmann	HO-11(-)-127-B-87	C
ERCO	Ercoupe	415 C	572	Continental	C-90-12F	McCauley	1A90/CF7144	A
ERCO	Ercoupe	415 D	635	Continental	C-90-12F	McCauley	1A90/CF7144	D
HMNY	Evektor	EV 97 Mod. 2000 R	472.5	Rotax	912 S	DUC	Swirl 174	D
BREZ	Experimental	Aerostyle Breezer	580	Rotax	912 ULS	Woodcomp	SR200	D
AVID	Experimental	AVID FLYER	413	Rotax	532LC	Perry	71-37	D
AVID	Experimental	AVID FLYER MK IV	521	Rotax	912 ULS	Arplast	Ecoprop 4T DE 3	D
AVID	Experimental	AVID HAULER	492	Rotax	582LC	Warp	Warp Drive	C
BX2	Experimental	BX-2	550	Continental	A-65	Brändli	160/150	D
MC10	Experimental	CRI-CRI MC 15	170	JPX	PUL 212	Eigenbau	MC/AS 695-200-103	C
MCR1	Experimental	Dyn-Aero MCR-01	450	Rotax	912 UL	MT	MTV 7-A/152-106	C
MCR4	Experimental	Dyn-Aero MCR-4S	750	Rotax	912 ULS	MT	MTV 6-A/156-122	C
EUPA	Experimental	Europa XS	621	Rotax	914 UL2	Woodcomp	SR3000/3	D
EXPR	Experimental	Express 2000 ER	1700	Continental	IO-580-B1A	MT	MTV-9D/198-52	D
EXPR	Experimental	Express S-90	1497	Continental	IO-550-N	MT	MTV-9D/198-52	D

ICAO Code	Aircraft manufacturer	Aircraft type	MTOW in kg	Engine manufacturer	Engine type	Propeller manufacturer	Propeller type	Noise class
GLAS	Experimental	GLASAIR II FT	952	Lycoming	IO-360-B1E	Hartzell	HC-C2YK-1	D
GLAS	Experimental	GLASAIR II RG	951	Lycoming	O-320-D1A	MT	MTV-12-C	C
GLAS	Experimental	GLASAIR RG	862	Lycoming	IO-360-B1E	Hartzell	HC-C2YK-1	B
JAB4	Experimental	Jabiru J250	700	Jabiru	3300cc	Airmaster	AP332	B
FOX	Experimental	KITFOX 3	476	Jabiru	2200A	Jabiru	C000242 D 60 PO 42	C
FOX	Experimental	KITFOX 3; -4	476	Rotax	582LC	GSC	Tech III, Holz	D
FOX	Experimental	KITFOX 4	544	Rotax	912 UL	IVO	IVO-Propeller	D
FOX	Experimental	KITFOX 5	547	Rotax	912	Arplast	175DWAM	D
FOX	Experimental	KITFOX S4	500	Rotax	912 UL	Arplast	175DWAP 62/3	D
LNC2	Experimental	LANCAIR 320	794	Lycoming	O-320-D1F	MT	MTV-12-C/170-36	C
LNC2	Experimental	LANCAIR 320	765	Lycoming	O-320-E2A	MT	MTV-17-C/175-17	A
LGEZ	Experimental	LONG EZE	646	Lycoming	O-235-L2A	Great Am	62X60	A
LGEZ	Experimental	LONG EZE	690	Lycoming	O-320-D2A	Great Am	62X72	B
MAJR	Experimental	LUTON MAJ. LA5	635	RR	C90-14F	Hoffmann	HO-14-183100	C
HM19	Experimental	MIGNET HM19C	530	Continental	C-90-12	Hoffmann	HO-14-178-100	C
HM38	Experimental	MIGNET HM380	590	Continental	C-90-14F	Hoffmann	HO-14-178-115	C
POLI	Experimental	POLLIWAGEN	612	Revmaster	2100-D	MalooF	2C 3.9	B
PULS	Experimental	PULSAR XP	477	Rotax	912	GSC Canada	GSC	C
QUIC	Experimental	QUICKIE	225	Onan	18 HP	Cowley	P30 D42	D
D31	Experimental	STARK T. D31	270	VW	1200	Rousseau	Rousseau	C
D31	Experimental	STARK TURBULENT	320	VW	1500	Hoffmann	HO-FH2/S1113	C
JT2	Experimental	TAYLOR TITCH	460	RR	O-200-A	Hegi	60X60	D
NIPR	Experimental	TIPSY N. MK II	300	VW	1500	Hoffmann	HO-11-137885	D
NIPR	Experimental	TIPSY N. MK3	330	ARDEM	4C02	DRG	Z3405	C
NIPR	Experimental	TIPSY N. MK3	330	ARDEM	4C02	Evra	HR 1201	C
RV8	Experimental	Van's RV-10	1225	Lycoming	IO-540-X	Hartzell	C2YR-1BFP/F8068D	C
RV4	Experimental	Van's RV-4	680	Lycoming	O-320-D1A	Prince	68/76 LK P-Tip	D
RV6	Experimental	Van's RV-6	726	Lycoming	O-320-D1A	Sensenich	70CM759-0-79	D
RV7	Experimental	Van's RV-7	816	Lycoming	IO-360-M1B	MT	MTV-12-B/183-59B	B
RV7	Experimental	Van's RV-7	815	Lycoming	O-320-D1A	Sensenich	70CM759-0-80	D
RV7	Experimental	Van's RV-7A	816.5	Mattituck	TMX IO-360	Hartzell	C2YR-1BFP/F7497-2	D
RV7	Experimental	Van's RV-7A	817	Mattituck	TMX IO-360	Sensenich	72FM859-1-85	D
RV8	Experimental	Van's RV-8	816	Lycoming	IO-360-M1B	MT	MTV-12-B-C/183-59b	D
VEZE	Experimental	VARI EZE	480	Lycoming	O-235-C2C	Hendrickson	H58G74	C
VP1	Experimental	Volksplane VP-1	380	VW	1500H	Hegi	8-74	C
VP1	Experimental	Volksplane VP-1	440	Rotax	582	Woodcomp	SR200	D
V322	Experimental	Votec 322	950	Lycoming	YAEIO-580-EXP	MT	MTV-14-B-C/C195-30d	D
V322	Experimental	Votec 322	950	Lycoming	AEIO-540-C1B	MT	MTV-14-B-C/C195-30d	D
V351	Experimental	Votec 351	870	Lycoming	AEIO-580	MT	MTV-9-B-C/C203-20d	D
EXPR	Experimental	Wheeler Express CT	1454	Lycoming	Lyc IO-360-ES(1)B	MT	MTV-12-D/180-17	D
CH70	Experimental	Zenair CH-701 STOL	545	Rotax	912 UL	Warp Drive	CF68R	C
CH30	Experimental	Zenair TRI-Z	840	Lycoming	O-320-A2B	MT	MT 180R145-3D	C
CH60	Experimental	Zenair Zod 601 HDS	545	Rotax	912 UL	Warp	Warp Drive 68"	D
E300	Extra FZ-Bau	EA 300	950	Lycoming	AEIO-540-L1B5D	MT	MTV-14B-C/C190-17	D
E300	Extra FZ-Bau	EA 300/200	840	Lycoming	AEIO-360-A1E	MT	MTV-12-B-C/C183-17e	B

ICAO Code	Aircraft manufacturer	Aircraft type	MTOW in kg	Engine manufacturer	Engine type	Propeller manufacturer	Propeller type	Noise class
E300	Extra FZ-Bau	EA 300/L	950	Lycoming	AEIO-540-L1B5D	MT	MTV-14B-C/C190-17	D
E400	Extra FZ-Bau	EA 400-500	2130	RR	250-B17F/2	MT	MTV-5-1-D-C-F-R(A)/CFR210-56	D
FA24	Fairchild	24R46A	1162	Ranger	6-440-C5	Hoffmann	HO-33-214-12	C
FA24	Fairchild	24-W-41-A	1162	Warner	R-500-7	Hoffmann	HO-33-218-132	C
FA24	Fairchild	F24R46A	1162	Ranger	6-440-C5	Sensenich	86AB-54	B
F8L	Falco	F8L	750	Lycoming	O-320-A2B	Hartzell	HC-A2XL-1	A
F8L	Falco	F8L	820	Lycoming	O-320-A2A	Hartzell	HC-C2YL-1B	B
F8L	Falco	F8L	820	Lycoming	O-320-A2B	Hartzell	HC-C2YL-1B	A
F8L	Falco	F8L	820	Lycoming	O-320-E1C	Hartzell	HC-C2YL-1BF/F7663A-4	C
SC01	FFT Gyroflug	SCO1 SPEED C.	680	Lycoming	O-235-P2A	Hoffmann	HO-V113B-LF-LD150+2A	B
SC01	FFT Gyroflug	SCO1B-160	715	Lycoming	O-320-D1A	MT	MTV-6-C/LD152-07	B
AS02	FZW Altenrh	AS 202	999	Lycoming	O-320-E2A	McCaughey	1C172/MGM7458	A
AS02	FZW Altenrh	AS 202/15	999	Lycoming	O-320-E2A	McCaughey	1C172/MGM7458	C
AS02	FZW Altenrh	AS 202/15,-1	999	Lycoming	O-320-D2A	McCaughey	1C172/MGM7460	D
AS02	FZW Altenrh	AS 202/18A	1050	Lycoming	AEIO-360B1F	Hartzell	HC-C2YK-1BF	C
AS02	FZW Altenrh	AS 202/18A1	1050	Lycoming	AEIO-360B1F	Hartzell	HC-C2YK-1BF	C
AS02	FZW Altenrh	AS 202/18A2	1080	Lycoming	AEIO-360-B1F	Hartzell	HC-C2YK-1BF	C
AS02	FZW Altenrh	AS 202/18A3	1080	Lycoming	AEIO-360-B1F	Hartzell	HC-C2YK-1BF	C
AS02	FZW Altenrh	AS 202/18A4	1080	Lycoming	AEIO-360-B1F	Hartzell	HC-C2YK-1BF	C
AS2T	FZW Altenrh	AS 202/32TP	1080	Allison	DDA 250-B17D	Hartzell	HC-BTF-7A/10173N-19R	D
RF3	Fournier	RF 3	350	Rectimo	4AR-1200	Hoffmann	HO-11-133S 70L	D
RF5	Fournier	RF 5B "SPERBER"	700	Limbach	L 2000 E01	MT	MTV-1-A/L 160-3	C
SUBA	Fuji	FA 200-180	1150	Lycoming	IO-360-B1B	McCaughey	B2D34C53-()/()-74E-0	C
SUBA	Fuji	FA 200-180AO	1139	Lycoming	IO-360-A5AD	McCaughey	1A170/EFA7658	B
G103	Grob	G 103 C TWIN III SL	710	Rotax	505A	MT	MTV-24-M/158-16	D
G103	Grob	G 103 C TWIN III SL	710	Rotax	505A	Technoflug	KS-1C-158-R-108	D
G109	Grob	G 109 B	850	Grob	2500 D1	Hoffmann	HO-V62-R-L160BT	D
G109	Grob	G 109 B	850	Grob	2500 E1	Hoffmann	HO-V62-R-L160BT	D
G109	Grob	G 109 B	850	Limbach	L 2400 DT1	MT	MTV-1-A/L170-05	B
G115	Grob	G 115 B	920	Lycoming	O-320-D1A	Sensenich	74DM65S-2-64	D
GA7	Gulfstream	GA-7	1724	Lycoming	O-320-D1D	Hartzell	HC-F2YL-2UF	D
B190	Hawker Beech	1900D	7766	P&W	PT6A-67D	Hartzell	HC-E4A-3()/E10950()K	A
BE20	Hawker Beech	200	5670	P&W	PT6A-42	Hartzell	HC-E4N-3G/D93905K-1R	D
BE20	Hawker Beech	200, B200	5675	P&W	PT6A-42	Hartzell	HC-D4N-3A/D9383K	D
BE20	Hawker Beech	200, B200 (Raisb)	5670	P&W	PT6A-41	Hartzell	HC-D4N-3A	D
BE20	Hawker Beech	200C (Raisb)	5670	P&W	PT6A-41	Hartzell	HC-D4N-3A/D9383K	D
BE23	Hawker Beech	23	1043	Lycoming	O-320-D2B	Sensenich	M74DM-0-60	C
BE30	Hawker Beech	300	6351	P&W	PT6A-60A	Hartzell	HC-B4MP-3	D
BE30	Hawker Beech	300,B300	6804	P&W	PT6A-60A	Hartzell	HC-B4MP-3C	D
BE30	Hawker Beech	300LW	5670	P&W	PT6A-60A	Hartzell	HC-B4MP-3B/M10476K	D
BE33	Hawker Beech	35-33	1383	Continental	IO-470-J	Hartzell	PHC-L3YF-1R	C
BE33	Hawker Beech	35-A33	1360	Continental	IO-470-K	Hartzell	BHC-9Z2F-1D1	B
BE35	Hawker Beech	35-A33	1360	Continental	IO-470-K	Hartzell	PHC-L3YF-1R	C
BE35	Hawker Beech	35-B33	1360	Continental	IO-470-K	Hartzell	BHC-L2YF-1	B
BE33	Hawker Beech	35-C33	1385	Continental	IO-470-K	Hoffmann	HO-V92/195C	C

ICAO Code	Aircraft manufacturer	Aircraft type	MTOW /in kg	Engine manufacturer	Engine type	Propeller manufacturer	Propeller type	Noise class
BE33	Hawker Beech	35-C33	1383	Continental	IO-470-K	McCaughey	2A36C23	B
BE33	Hawker Beech	35-C33	1383	Continental	IO-470-K	McCaughey	3AF32C76	C
BE33	Hawker Beech	35-C33	1383	Continental	IO-550-B	MT	MTV-9-D/203-58	D
BE33	Hawker Beech	35-C33A	1497	Continental	IO-520-BA	Hartzell	PHC-C3YF-1RF/F8468(A)-6R	D
BE33	Hawker Beech	35-C33A	1497	Continental	IO-520-B	McCaughey	2A36C23	C
BE58	Hawker Beech	58	2495	Continental	IO-550-C	Hartzell	PHC-J3YF-2UF/FC7391D(B,K)	A
BE58	Hawker Beech	58	2494	Continental	IO-550-C	Hartzell	PHC-J3YF-2UF/FC7663-(K)-2R	C
BE58	Hawker Beech	58 P	2812	Continental	TSIO-520-WB	Hartzell	PHC-C3YF-2UF/FC7663DRK	C
BE58	Hawker Beech	58 P	2767	Continental	TSIO-520-L	Hartzell	PHC-J3YF-2F	B
BE58	Hawker Beech	58 P	2812	Continental	TSIO-520-WB	McCaughey	3AF32CS11	B
BE58	Hawker Beech	58 PA	2719	Continental	TSIO-520-WB	Hartzell	PHC-J3YF-2UF/FC7663DR	C
BE60	Hawker Beech	60	3050	Lycoming	TIO-541-E1A4	Hartzell	HC-F3YR-2UF/FC7479B-2R	B
BE77	Hawker Beech	77	760	Lycoming	O-235-L2C	Sensenich	72CK512-0-52	D
BE95	Hawker Beech	95	1814	Lycoming	O-360-A1A	Hartzell	HC-922K-2(I)/8447()-12A	C
BE55	Hawker Beech	95-55	2213	Continental	IO-470-L	Hartzell	PHC-C3YF-2UF/FC7663B-2R	C
BE55	Hawker Beech	95-55	2214	Continental	IO-470-L	McCaughey	2AF34C55	C
BE55	Hawker Beech	95-B55	2314	Continental	IO-470-L	Hartzell	PHC-C3YF-2	C
BE55	Hawker Beech	95-B55	2268	Continental	IO-470-L	McCaughey	2AF34C55	D
BE23	Hawker Beech	A23-19	998	Lycoming	O-320-D2C	Sensenich	74DM6-0-60	C
BE23	Hawker Beech	A23-19	998	Lycoming	O-320-E2C	Sensenich	M74DM-0-58	C
BE35	Hawker Beech	A35	1200	Continental	E-185-8	Hartzell	HC-A2X20-4A1	D
BE36	Hawker Beech	A36	1656	Continental	IO-550-B	Hartzell	PHC-C3YF-1RF/F7663()-2Q	C
BE36	Hawker Beech	A36	1633	Continental	IO-520-BB	McCaughey	3A32C76/82NB-2	C
BE36	Hawker Beech	B36TC	1746	Continental	TSIO-520-U	McCaughey	3A32C406	B
BE36	Hawker Beech	B36TC	1656	Continental	TSIO-520-UB	McCaughey	3A32C406-D	B
BE36	Hawker Beech	B36TC	1746	Continental	TSIO-520-UB	Sensenich	PHC-C3YF-1RF/F8468A-6R	B
BE23	Hawker Beech	C23	1111	Lycoming	O-360-A4J	Sensenich	76EM855-0-60	B
BE35	Hawker Beech	C35	1225	Continental	E-185-11	Beech	215-109	C
BE9L	Hawker Beech	C90	4377	P&W	PT6A-21	Hartzell	HC-B3TN-3(I)/T10173()-8	D
BE9L	Hawker Beech	C90	4581	P&W	PT6A-135A	Hartzell	HC-D4N-3C/D9290(S)(K)	D
BE9L	Hawker Beech	C90A	4581	P&W	PT6A-21	Hartzell	HC-D4N-3C/D9290K	D
BE90	Hawker Beech	C90GTI	4581	P&W	PT6A-135A	Hartzell	HC-E4N-3N/D8990SK	D
BE9T	Hawker Beech	C90GTI	4756	P&W	PT6A-135A	Hartzell	HC-E4N-3N/D8990S(K)	D
BE35	Hawker Beech	D35	1236	Continental	E-185-11	Beech	215-107	C
BE95	Hawker Beech	D95A	1906	Lycoming	IO-360-B1B	Hartzell	HC-92WK-2B	C
BE95	Hawker Beech	E95	1906	Lycoming	IO-360-B1B	Hartzell	HC-92WK-2(I)/W8447()-12A	C
BE33	Hawker Beech	F33A	1542	Continental	IO-520-BB	Hartzell	PHC-C3YF-1RF	C
BE33	Hawker Beech	F33A	1542	Continental	IO-520-BA	Hartzell	PHC-C3YF-1RF/F7663D-2Q	D
BE33	Hawker Beech	F33A	1542	Continental	IO-520-BA	McCaughey	3A32C406-C/82NDB-2	C
BE33	Hawker Beech	F33A	1542	Continental	IO-520-BA	McCaughey	3A32C76	C
BE33	Hawker Beech	F33A	1542	Continental	IO-520-BB	McCaughey	3A32C76S/82NB-2	C
BE35	Hawker Beech	F35	1250	Continental	E-225-8	Hartzell	HC-A2X20-4A1	D
BE9T	Hawker Beech	F90	4967	P&W	PT6A-135	Hartzell	HC-B4TN-3	D
BE35	Hawker Beech	G35	1350	Continental	E-225-8	Beech	215-107	D
BE58	Hawker Beech	G58	2494	Continental	IO-550-C	Hartzell	PHC-J3YF-2UF/FC7663K-2R	D

ICAO Code	Aircraft manufacturer	Aircraft type	MTOW in kg	Engine manufacturer	Engine type	Propeller manufacturer	Propeller type	Noise class
BE35	Hawker Beech	P35	1406	Lycoming	IO-470-N	Hartzell	PHC-L3YF-1RF	C
BE35	Hawker Beech	V35	1633	Continental	IO-550-B-RA	Hartzell	PHC-C3YF-1RF/F8068	C
BE35	Hawker Beech	V35	1542	Continental	TSIO-520-D	McCaughey	3A32C76	B
BE35	Hawker Beech	V35B	1542	Continental	IO-520-BA	McCaughey	3A32C76	C
BE35	Hawker Beech	V35B	1633	Continental	IO-520-BA	McCaughey	3A32C76/82NB-2	C
DV20	Hoffmann	DV 20 KATANA	730	Rotax	912 A3	Hoffmann	HO-V352F-170FQ	D
DIMO	Hoffmann	H 36	770	Limbach	L 2000 EB1.C	Hoffmann	HO-V62-R-160BT	D
DIMO	Hoffmann	H 36	770	Limbach	L 2000 EB 1.AC	Hoffmann	HO-V62-R-160BT	D
DIMO	Hoffmann	H 36 "DIMONA"	770	Sauer	SS 2100 H1S	Hoffmann	HO-V62R/160 BT	B
DIMO	Hoffmann	HK 36 S.-DIMONA	770	Rotax	912 A2	MT	MTV-1-A/170-08	D
IS28	ICA Brasov	IS 28 M2/GR	780	Rotax	912 A3	Hoffmann	HO-V352F-S1/S170FQ	D
JB15	Job	15-180/2	965	Lycoming	O-360-A3A	Sensenich	76EM855-0-56	D
D11	Jodel	D112	550	Continental	A-65	Diverse	Festprop.	D
D11	Jodel	D11-2	620	Continental	C-90-14F	McCaughey	1B90/CM 7152	D
D11	Jodel	D117	620	Continental	C-90-14F	Evra	D11-28-1B	D
D11	Jodel	D120	650	Continental	C-90-12F	Diverse	Festprop.	D
D140	Jodel	D140	1200	Lycoming	O-360-A1A	Sensenich	M76EM8-0-62	B
D140	Jodel	D140C	1200	Lycoming	O-360-A3A	Sensenich	76EM8-0-58	C
D140	Jodel	D140C	1200	Lycoming	O-360-A3A	Sensenich	76EM8-0-62	D
D140	Jodel	D140C	1200	Lycoming	IO-360-B2F6	Sensenich	76EM8-0-62	D
D140	Jodel	D140R	1200	Lycoming	IO-360-A1D6	McCaughey	B2D34C213/90DHA-16	D
DR10	Jodel	DR 1050	750	Continental	O-200-A	Ratier	FH 110-500R	C
DR10	Jodel	DR 1050 M1	780	Continental	O-200-A	Hoffmann	HO-14-170S-123	C
DR22	Jodel	DR 220	780	Continental	O-200-A	Hoffmann	HO 14-170S 123	A
DR22	Jodel	DR 220	780	Continental	O-200-A	Hoffmann	HO 14-170S 123	D
D250	Jodel	DR 250-160	960	Lycoming	O-320-D2A	Hoffmann	HO-23HM-180-155S	B
D250	Jodel	DR 250-160	960	Lycoming	IO-360-B1B	MT	MTV-20-B/180220	D
D250	Jodel	DR 250-160	960	Lycoming	O-320-D2A	Sensenich	74DM655-2-64	B
D250	Jodel	DR 250-160	960	Lycoming	O-320-D2A	Sensenich	74DM655-2-66	D
D11	Jodel	U2V	700	Continental	O-200-A	Evra	D11-28-4C	A
D11	Jodel	U2V	700	Continental	O-200-A	Hoffmann	HO-14-183-11	A
D11	Jodel	U2V	700	Continental	O-200-A	Schneider	Schneider	C
KL35	Klemm	35	780	Hirth	HM 504-A2	Hoffmann	185-123	A
LAE1	Lange	E1 Antares	660	Lange	EA 42	Lange	LF-P42	D
XL2	Liberty	XL-2	749	Continental	IOF-240-B	MT	MT 175 R 127-2Ca	B
L8	Luscombe	8A	572	Continental	C-90-8F	Evra	N 1775	D
L8	Luscombe	8A	751	Continental	A-65-8F	McCaughey	1B90/CM7447	D
L8	Luscombe	8A	540	Continental	A-65-8	Sensenich	76C-46	D
L8	Luscombe	8A	544	Continental	A-65-8F	Universal	74A-50	D
L8	Luscombe	8F	635	Continental	C-90-12F	McCaughey	1B90/CM7154	C
AV68	M&D FZ-Bau	AVO 68-R115 "Samb"	750	Rotax	914 F3	Hoffmann	HO-V352F-S2/CS170FQ+10	D
MD3	M.Dätwyler	MD3-160	920	Lycoming	O-320-D2A	Sensenich	74DM658-0-62	C
M4	Maule	M-4-210C	1043	Continental	IO-360-A-D	McCaughey	D2A34C67	C
M4	Maule	M-4-210C	1043	Continental	IO-360-A	McCaughey	D2A34C67	C
M5	Maule	M-5-235C	1134	Lycoming	IO-540-W1A5D	Hartzell	B3D32C414-(/)/(-)82NDA-2	B

ICAO Code	Aircraft manufacturer	Aircraft type	MTOW in kg	Engine manufacturer	Engine type	Propeller manufacturer	Propeller type	Noise class
M5	Maule	M-5-235C	1043	Lycoming	O-540-J1A5D	Hartzell	HC-C2YR-1BF/F8468A-6R	D
M5	Maule	M-5-235C	1134	Lycoming	IO-540-W1A5D	Hartzell	HC-C2YR-1BF/F8468A-6R	D
M5	Maule	M-5-235C	1043	Lycoming	O-540-J1A5D	McCauley	B3D32C414-C/G82NDA-4	D
M7	Maule	M-7-235	1134	Lycoming	IO-540-W1A5D	Hartzell	HC-C2YR-1BF/F8468A-6R	D
M7	Maule	M-7-235	1134	Lycoming	IO-540-W1A5D	Hoffmann	HO-V123K-K/193DY	D
M7	Maule	M-7-235	1134	Lycoming	O-540-W1A5D	McCauley	B3D32C414/82NDA-2	D
M7	Maule	M-7-235C	1134	Lycoming	O-540-B4B5	McCauley	B3D32C414-C/G-82NDA-4	D
M7	Maule	MX-7-235	1134	Lycoming	IO-540-W1A5D	Hartzell	HC-C2YR-1BF	D
M7	Maule	MX-7-235	1134	Lycoming	O-540-J1A5D	Hoffmann	HO-V123K/193DY	D
M7	Maule	MX-7-235	1134	Lycoming	IO-540-W1A5D	McCauley	B3D32C414-()/I-82NDA-2	D
M7	Maule	MX-7-235	1134	Lycoming	O-540-J1A5D	McCauley	B3D32C414-C	D
M7	Maule	MX-7-235	1134	Lycoming	O-540-B4B5	McCauley	B3D32C414-C/G-82NDA-4	D
M7	Maule	MXT-7-180A	1089	Lycoming	O-360-C4F	Sensenich	76EM855-0-56	B
ME08	Messerschmitt	ME 108 B	1380	Argus	As 10C/3	Schwarz	Me P7 Nabe:9-70-102-A-1	D
FL55	Meteor	FL 55 B	800	Lycoming	O-340-A1A	Hartzell	HC-82XG1B	B
FL55	Meteor	FL 55 CM	900	Lycoming	O-360-A1A	McCauley	2D36C14-B	C
M20P	Mooney	M 20 A	1110	Lycoming	O-360-A1A	McCauley	2D36C14/78KM-4	B
M20P	Mooney	M 20 C	1168	Lycoming	O-360-A1D	Hartzell	HC-C2YK-1B()/I7666-2	B
M20P	Mooney	M 20 C	1168	Lycoming	O-360-A1D	McCauley	2D34C53A	B
M20P	Mooney	M 20 E	1168	Lycoming	IO-360-A1A	Hartzell	HC-C2Y(K)-1()/I7666-2	C
M20P	Mooney	M 20 E	1168	Lycoming	IO-360-A1A	Hartzell	HC-C2YR-1BFP/F7497	B
M20P	Mooney	M 20 E	1170	Lycoming	IO-360-A1A	Hoffmann	HO-V123K/180	C
M20P	Mooney	M 20 E	1170	Lycoming	IO-360-A1A	MT	MTV-12-B/180-59b	D
M20P	Mooney	M 20 F	1243	Lycoming	IO-360-A1A	Hartzell	HC-C2YK-1BF/7666-2	C
M20P	Mooney	M 20 F	1243	Lycoming	IO-360-A3B6D	MT	MTV-12-B/180-17	C
M20P	Mooney	M 20 F	1243	Lycoming	IO-360-A1A	MT	MTV-12-B/180-59b	D
M20K	Mooney	M 20 K	1315	Continental	TSIO-360-MB(1)	MT	MTV-12-D/180-17	D
M20T	Mooney	M 20 K	1315	Continental	TSIO-360-GB	Hoffmann	HO-V123F1-180R.R-B	C
M20T	Mooney	M 20 K	1315	Continental	TSIO-360-GB	McCauley	2A34C216/90DHB-16E	C
M20T	Mooney	M 20 K	1315	Continental	TSIO-360-LB1	MT	MTV-12-D/188-53	D
M20T	Mooney	M 20 K	1420	Continental	TSIO-360-SB	MT	MTV-12-D/188-53	D
M20T	Mooney	M 20 K 252TSE	1315	Continental	TSIO-360-MB	McCauley	2A34C221/90DHC-16E	C
M20P	Mooney	M 20 L	1315	Porsche	PFM 3200 NO3	MT	MTV-12-D/188-301	D
M20T	Mooney	M 20 M	1528	Lycoming	TIO-540-AF1A	McCauley	B3D32C417	D
M20T	Mooney	M 20 M	1452	Lycoming	TIO-540-AF1B	McCauley	B3D32C417/82NRD-7	D
M20T	Mooney	M 20 M	1528	Lycoming	TIO-540-AF1A	MT	MTV-14-B/185-59b	D
M20P	Mooney	M 20 R	1528	Continental	IO-550-G()	Hartzell	HC-J3YF-1RF/F7693(B)-2	D
M20P	Mooney	M 20 R	1528	Continental	IO-550-G5B	McCauley	3A32C418/G-82NRC-9	D
M22	Mooney	M 22	1669	Lycoming	TIO-541-A1A	Hartzell	HC-C2YK-1B	B
M20P	Mooney	M20J	1243	Lycoming	IO-360-A3B6D	Hartzell	HC-C2YK-1BF/7666A-3Q	C
M20P	Mooney	M20J	1243	Lycoming	IO-360-A3B6D	Hartzell	HC-C3YR-1RF/F7288	B

ICAO Code	Aircraft manufacturer	Aircraft type	MTOW in kg	Engine manufacturer	Engine type	Propeller manufacturer	Propeller type	Noise class
M20P	Mooney	M20J	1243	Lycoming	IO-360-A3B6D	Hoffmann	HO-V123K-180 R	C
M20P	Mooney	M20J	1243	Lycoming	IO-360-A3B6	Hoffmann	HO-V123K-180R	C
M20P	Mooney	M20J	1243	Lycoming	IO-360-A1B6D	Hoffmann	HO-V123K-180R	C
M20P	Mooney	M20J	1243	Lycoming	IO-360-A1B6D	McCaughey	B2D34C214	B
M20P	Mooney	M20J	1315	Lycoming	IO-360-A3B6D	McCaughey	B2D34C214(I)/(I)90DHB-16E	D
M20P	Mooney	M20J	1315	Lycoming	IO-360-A3B6D	MT	MTV-12-B/180-17	D
M20P	Mooney	M20J	1243	Lycoming	IO-360-A3D6D	MT	MTV-12-B/180-17	D
M20P	Mooney	M20J	1243	Lycoming	IO-360-A3D6	MT	MTV-12-B/180-59b	D
Z43	Moravan	Z 143 L	1350	Lycoming	O-540-J3A5	MT	MTV-9B/195-45a	D
Z26	Moravan	Z 326	975	Letecke Zad	Walter Minor 6-III	Moravan	Z 326 641	D
Z26	Moravan	Z 526 F	975	Letecke Zad	Walter M 137 A	Aero	V-503A	B
NAVI	Navion	NA17(L-17A)	1247	Continental	E-185-3	Hartzell	HC-12X20	A
NAVI	Navion	NAVION A (L-17B)	1247	Continental	E-225-8	Hartzell	HC-A2V20-4	B
N120	Norecrin	II	1050	Regnier	4L00	Hoffmann	HO 42HM-2005 160	D
N120	Norecrin	II	1050	Regnier	4L00	Hoffmann	HO-42-200515	D
P750	Pacific	PAC 750XL	3395	P&W	PT6A-34	Hartzell	HC-B3TN-3D/T10282NS+4 MTV-16-1-E-C-F-R(P)/CFR250-55a	A
P750	Pacific Aerospace	PAC 750XL	3395	P&W	PT6A-34	MT		D
OSCR	Partenavia	P 66 B-150	930	Lycoming	O-320-E2A	Sensenich	74DM655-2-60	A
P68	Partenavia	P 68 B	1960	Lycoming	IO-360-A1B	Hartzell	HC-C2YK-2CF/FC7666A-4	D
P68	Partenavia	P 68 C	1990	Lycoming	IO-360-A1B6	Hartzell	HC-C2YK-2C(I)F/FC7666A-4	D
P68	Partenavia	P 68 C	2084	Lycoming	IO-360-A1B6	Hartzell	HC-C2YK-2C(I)F/FC7666A-4	D
P68	Partenavia	P.68TC "Observer"	2084	Lycoming	TIO-360-C1A6D	Hartzell	HC-C2YK-2C(I)F/FC7666A-0	C
P68	Partenavia	P.68TC "Observer"	2084	Lycoming	TIO-360-C1A6D	MT	MTV-12-B-C-F/CF188-53	D
P149	Piaggio Aero	FW-149-D	1820	Lycoming	GO-480-B1A6	Piaggio	P1033-G4/D4	D
P180	Piaggio Aero	P.180 AVANTI	5239	P&W	PT6A-66	Hartzell	HC-E5N-3/HE8218 HC-E5N-3(I)/HE8218, HC-E5N-3(I)/LE8218	C
P180	Piaggio Aero	P.180 AVANTI II	5489	P&W	PT6A-66B	Hartzell		A
CP30	Piel	CP 301 A	610	Continental	C-90-14F	Hoffmann	HO 14-183 110	B
CP30	Piel	CP 301 A	610	Continental	C-90-14F	MT	MT 178R 120-2C	C
CP30	Piel	CP 301 E	610	Continental	O-200-A	McCaughey	1A100/MCM6758	C
PP2	Pilatus	P2-05/06	1920	Walter	AS-410-A2	Argus	L-22	D
PP3	Pilatus	P3-03,-05	1575	Lycoming	GO-435-C2A	Hartzell	HC-83V20-2C1	D
PC12	Pilatus	PC-12/45	4500	P&W	PT6A-67B	Hartzell	HC-E4A-3D/E10477K	D
PC12	Pilatus	PC-12/47	4740	P&W	PT6A-67B	Hartzell	HC-E4A-3D/E10477K	D
PC12	Pilatus	PC-12/47	4740	P&W	PT6A-67P	MT	MTV-27-1-N-C-F-R(P)/CFR260-65a	D
PC12	Pilatus	PC-12/47E	4740	P&W	PT6A-67P	Hartzell	HC-E4A-3D/E104775K MTV-27-1-N-C-F-R(P)/CFR260-65a	D
PC12	Pilatus	PC-12/47E	4740	P&W	PT6A-67P	MT		D
PC21	Pilatus	PC-21	3600	P&W	PT6A-68B	Hartzell	HC-E5A-2/E9193B	D
PC21	Pilatus	PC-21	3100	P&W	PT6A-68B	Hartzell	HC-E5A-2/E9193B	D
PC6T	Pilatus	PC-6/B1-H2	2200	P&W	PT6A-20B	Hartzell	HC-B3TN-3C/T10173C	D
PC6T	Pilatus	PC-6/B1-H2;-B2-H2	2200	P&W	PT6A-20;-27	Hartzell	HC-D4N-3PX1/D9511FX	D
PC6T	Pilatus	PC-6/B2-H2	2200	P&W	PT6A-27	Hartzell	HC-B3TN-3D	C
PC6T	Pilatus	PC-6/B2-H4	2800	P&W	PT6A-27	Hartzell	HC-B3TN-3D	D
PC6T	Pilatus	PC-6/B2-H4	2800	P&W	PT6A-27	Hartzell	HC-D4N-3PX1/D9511FX	D
PC7	Pilatus	PC-7	2700	P&W	PT6A-25A	Hartzell	HC-B3TN-2	B

ICAO Code	Aircraft manufacturer	Aircraft type	MTOW in kg	Engine manufacturer	Engine type	Propeller manufacturer	Propeller type	Noise class
PC7	Pilatus	PC-7	1900	P&W	PT6A-25A	Hartzell	HC-83TN-2	D
PC7	Pilatus	PC-7 MKII	2850	P&W	PT6A-25C	Hartzell	HC-D4N-2A	D
PC7	Pilatus	PC-7 MKII	2700	P&W	PT6A-25C	Hartzell	HC-D4N-2A	D
PC9	Pilatus	PC-9 (M)	3200	P&W	PT6A-62	Hartzell	HC-D4N-2A/D9512A	C
PC9	Pilatus	PC-9 (M)	2350	P&W	PT6A-62	Hartzell	HC-D4N-2A/D9512A	D
PC9	Pilatus	PC-9*	2200	P&W	PT6A-62	Hartzell	HC-D4N-2A	D
J3	Piper	J3C	580	Continental	C-90-12F	MT	MT 183R100-2C	C
PA12	Piper	PA-12	795	Lycoming	O-290-D2	McCauley	1A170/DM 7445	C
PA12	Piper	PA-12	795	Lycoming	O-290-D2	Sensenich	M74DM	C
PA16	Piper	PA-16	750	Lycoming	O-290-D2	Sensenich	M74DM52	D
PA18	Piper	PA-18	680	Continental	C-90-8F	McCauley	1A101/DCM6948	D
PA18	Piper	PA-18	680	Continental	C-90-8F	Sensenich	M76-AK	C
PA18	Piper	PA-18-125	680	Lycoming	O-290-D	Sensenich	74DM6-0-52	C
PA18	Piper	PA-18-135	680	Lycoming	O-290-D2	Sensenich	74DM6-0-52	C
PA18	Piper	PA-18-150	794	Lycoming	O-320-A2B	Sensenich	(M)74DM6-()-54	D
PA18	Piper	PA-18-150	794	Lycoming	O-320-A2B	Sensenich	(M)74DM6-()-56	D
PA18	Piper	PA-18-150	795	Lycoming	O-320-A2B	Sensenich	74DM6-0-50	C
PA18	Piper	PA-18-150	794	Lycoming	O-320-A2B	Sensenich	74DM6-0-56	D
PA18	Piper	PA-18-150	794	Lycoming	O-320-A2B	Sensenich	74DM6-0-60	C
PA18	Piper	PA-18-150	794	Lycoming	O-320-A2A	Sensenich	M74 DM-0-52	D
PA18	Piper	PA-18-150	794	Lycoming	O-320-A2B	Sensenich	M74DM6-0-56	D
PA18	Piper	PA-18-180	794	Lycoming	O-360-A2A	Sensenich	76EM855-0-55	C
PA19	Piper	PA-19	680	Continental	C-90-8F	Sensenich	M76AK2	C
PA22	Piper	PA-22-108	750	Lycoming	O-235-C1B	Sensenich	M76-AM2	B
PA22	Piper	PA-22-135	885	Lycoming	O-290-D2	Sensenich	M74DM	D
PA22	Piper	PA-22-150	907	Lycoming	O-320-A	Sensenich	M74DM6-0-56	B
PA23	Piper	PA-23-160	1724	Lycoming	O-320-B1A	Hartzell	HC-82KG-2B	D
PA24	Piper	PA-24-250	1361	Lycoming	O-540-A1D5	Hartzell	HC-A2VK-1/V8433(N)-7	D
P28A	Piper	PA-28-140	975	Lycoming	O-320-E2A	Sensenich	74DM6-0-58	B
P28A	Piper	PA-28-140	975	Lycoming	O-320-D3G	Sensenich	74DM6-0-60	D
P28A	Piper	PA-28-140	975	Lycoming	O-320-E2A	Sensenich	M74DM6-0-58	B
P28A	Piper	PA-28-140	975	Lycoming	O-320-E2A	Sensenich	M74DM6-0-60	B
P28A	Piper	PA-28-161	1055	Lycoming	O-320-D3G	Sensenich	74DM6-0-60	B
P28A	Piper	PA-28-180	1090	Lycoming	O-360-A4A	Sensenich	76EM855-0-60	C
P28A	Piper	PA-28-181	1157	Lycoming	O-360-A4M	Sensenich	76EM8514-0-62	C
P28A	Piper	PA-28-181	1157	Lycoming	O-360-A4M	Sensenich	76EM855-0-62	C
P28B	Piper	PA-28-235	1362	Lycoming	O-540-B4B5	Hartzell	HC-C2YK-1B/8468A-4	B
P28B	Piper	PA-28-236	1361	Lycoming	O-540-J3A5D	Hartzell	HC-F2YR-1(J)/F8468A-4R	D
P28B	Piper	PA-28-236	1361	Lycoming	O-540-J3A5D	Hartzell	HC-F3YR-1ARF/F7693F	D
P28R	Piper	PA-28R-180	1134	Lycoming	IO-360-B1E	Hartzell	HC-C2YK-1/7666A-0	B
P28R	Piper	PA-28R-180	1135	Lycoming	IO-360-B1E	McCauley	B3D36C424/745A	B
P28R	Piper	PA-28R-200	1179	Lycoming	IO-360-C1C6	McCauley	C3D36C415/82NGA-8	B
P28R	Piper	PA-28R-200	1179	Lycoming	IO-360-C1C	McCauley	C3D36C415/82NGA-8	B
P28R	Piper	PA-28R-201T	1315	Continental	TSIO-360-FB	Hartzell	BHC-C2YF-1(J)/F8459A-8R	D
P28R	Piper	PA-28R-201T	1315	Continental	TSIO-360-F	Hartzell	BHC-C2YF-1/F8459A-8R	D

ICAO Code	Aircraft manufacturer	Aircraft type	MTOW in kg	Engine manufacturer	Engine type	Propeller manufacturer	Propeller type	Noise class
P28R	Piper	PA-28R-201T	1315	Teledyne	TSIO-360-FB1	Hartzell	BHC-C2YF-1BF/F8459A-8R	D
P28T	Piper	PA-28RT-201	1247	Lycoming	IO-360-C1C6	McCaughey	2D34C215/90DJA-14E	B
P28U	Piper	PA-28RT-201T	1315	Continental	TSIO-360-FB	Hartzell	BHC-C2YF-1()F/F8459A-8R	D
PA30	Piper	PA-30	1633	Lycoming	IO-320-B1A	Hartzell	HC-E2YL-2B	D
PA31	Piper	PA-31	2948	Lycoming	TIO-540-A2C	Hartzell	HC-E3YR-2()F/C8468()-6R	D
P31T	Piper	PA-31T	4082	P&W	PT6A-28	Hartzell	HC-B3TN-3B/T10173B-8 MTV-27-1-E-C-F-R(P)/CFR210-58d	D
P31T	Piper	PA-31T	4082	P&W	PT6A-135A	MT	MTV-27-1-E-C-F-R(P)/CFR210-58d	D
P31T	Piper	PA-31T	4082	P&W	PT6A-135	MT		D
P31T	Piper	PA-31T1	3946	P&W	PT6A-11	Hartzell	HC-B3TN-3B	D
P31T	Piper	PA-31T2	4297	P&W	PT6A-135	Hartzell	HC-B3TN-3B/T10178B-8R	D
PA32	Piper	PA-32-300	1542	Lycoming	IO-540-K1A5	Hartzell	HC-C2YK-1()F/8475(D)-4	B
PA32	Piper	PA-32-301T	1633	Lycoming	TIO-540-S1AD	Hartzell	HC-E2YR-1()F	D
P32R	Piper	PA-32R-301	1633	Lycoming	IO-540-K1G5D	Hartzell	HC-C3YR-1()F/F7663R-0	B
P32R	Piper	PA-32R-301	1633	Lycoming	IO-540-K1G5D	Hartzell	HC-I3YR-1BF/F7663DR	C
P32R	Piper	PA-32R-301T	1633	Lycoming	TIO-540-S1AD	Hartzell	HC-E3YR-1()F/F7673DR-0	D
P32R	Piper	PA-32R-301T	1633	Lycoming	TIO-540-AH1A	Hartzell	HC-I3YR-1(R)F/F7663DR()I-0	D
P32T	Piper	PA-32RT-300T	1633	Lycoming	TIO-540-S1AD	Hartzell	HC-E2YR-1()F/F8477-4	C
PA34	Piper	PA-34-200T	1999	Continental	TSIO-360-E	McCaughey	3AF34C502/503	D
PA38	Piper	PA-38-112	758	Lycoming	O-235-L2C	Sensenich	72CK-0-56	C
PA46	Piper	PA-46-310P	1860	Continental	TSIO-520-BE	Hartzell	BHC-C2YF-1BF	D
PA46	Piper	PA-46-350P	1950	P&W	PT6A-34	Hartzell	HC-E4N-3/E8501B-3.5	D
PA46	Piper	PA-46-350P	1950	Lycoming	TIO-540-AE2A	Hartzell	HC-I2YR-1BF/F8074() MTV-16-1-E-C-F-R(P)/CFR206-58a	D
PA46	Piper	PA-46-350P	1969	P&W	PT6A-35	MT	MTV-16-1-E-C-F-R(P)/CFR206-58a	D
PA46	Piper	PA-46-350P	1950	P&W	PT6A-35	MT		D
PA46	Piper	PA-46-500TP	2200	P&W	PT6A-42A	Hartzell	HC-E4N-3Q/E8501B-3.5	D
PA46	Piper	PA-46-500TP	2310	P&W	PT6A-42A	Hartzell	HC-E4N-3Q/E8501B-3.5	D
PISI	Pipistrel	Sinus	472.5	Rotax	912 UL	Pipistrel	Vario	D
PTS2	Pitts	S2S	714	Lycoming	AEIO-540D4A5	Hartzell	HC-C2YK-4	B
PICO	Procaer	F 15	1030	Lycoming	O-320-B2A	Hartzell	HC-82XL-1D	B
PICO	Procaer	F 15 B	1120	Lycoming	O-360-A1A	Hartzell	HC-92ZK-8D	C
RC3	Republic Av	RC-3 (Seabee)	1429	Franklin	6A8-215-9BF	Hartzell	HC-D2MV20-3	B
DR22	Robin	DR 221	840	Lycoming	O-235-C2A	Evra	88-75-34-F	D
DR22	Robin	DR 221	840	Lycoming	O-235-C2A	McCaughey	MCC 1A105/BCM 7056	D
DR30	Robin	DR 340	1000	Lycoming	O-360-E2A	Sensenich	74DM655-2-64	B
DR40	Robin	DR 400/120D	900	Lycoming	O-235-L2A	McCaughey	1A105/BCM7060	D
DR40	Robin	DR 400/120D	900	Lycoming	O-235-L2A	Sensenich	72CK56-0-56	C
DR40	Robin	DR 400/140B	1000	Lycoming	O-320-D2A	Sensenich	74DM655-2-64	D
DR40	Robin	DR 400/180	1100	Lycoming	O-360-A3A	Sensenich	76EM855-0-64	D
DR40	Robin	DR 400/180	1100	Lycoming	O-360-A1P	Sensenich	76EM855-0-64	D
DR40	Robin	DR 400/180R	1000	Lycoming	O-360-A1P	Sensenich	76EM855-0-58	C
DR40	Robin	DR 400/200R	1100	Lycoming	IO-360-A1B6	Hartzell	HC-C2YK-1BF/7666A-2	D
DR40	Robin	DR 400/500	1150	Lycoming	IO-360-A1B6	Hartzell	HC-C2YK-1BF/7666A-2	D
DR40	Robin	DR 400/RP	1100	Lycoming	O-540-J3A5	Hoffmann	HO-V123K-K/200CQ	C
HR10	Robin	HR 100/200	1200	Lycoming	IO-360-A1D6	Hartzell	HC-F2YR-1/7666A-2	C

ICAO Code	Aircraft manufacturer	Aircraft type	MTOW in kg	Engine manufacturer	Engine type	Propeller manufacturer	Propeller type	Noise class
HR10	Robin	HR 100/210 D	1250	Continental	IO-360-D	Hartzell	BHC-J2YF-1BF/7663-2,4R	C
HR10	Robin	HR 100/250TR	1400	Lycoming	IO-540-C4B5	Hartzell	HC-C2YK-1BF	D
HR20	Robin	HR 200/120	780	Lycoming	O-235-J2A	McCaughey	1A135/JCM7154	A
HR20	Robin	HR 200/160	800	Lycoming	O-320-D2A	Sensenich	74DM655-2-66	D
R200	Robin	R 2160	800	Lycoming	O-320-D	Sensenich	74DM655-2-64	A
R300	Robin	R 3000/160	1150	Lycoming	O-360-A3A	Sensenich	76EM855-0-64	D
R90R	Ruschmeyer	R 90-230 RG	1350	Lycoming	IO-540 C4D5	MT	MTV-14B/190-17	D
KZ7	S.A.I.	KZ VII	860	Continental	O-300-A	Hoffmann	HO-30-190-12	A
SB91	Saab	91 D	1205	Lycoming	O-360-A1A	McCaughey	2D36C14/78KM-4	A
SF25	Scheibe	SF 25 B	555	Sauer	SE 1800 E15	MT	MT 150L-90-1A	D
SF28	Scheibe	SF 28 A	610	Limbach	L 1700 EA-1	Hoffmann	HO-V62/L150	C
ARCP	Schempp-Hirth	Arcus M	800	Solo	2625-02i	Technoflug	KS-1G-160 R-120	D
DISC	Schempp-Hirth	DISCUS 2cT	565	Solo	2350	Oeler	OE-FL 5.83/83a5, v92	D
DISC	Schempp-Hirth	DISCUS bT	450	Solo	2350	Oeler	OE-FL 5.83/83	D
NIMB	Schempp-Hirth	NIMBUS-4DM	820	Rotax	535C	Technoflug	KS1G-160-R-98	D
NIMB	Schempp-Hirth	NIMBUS-4M	800	Rotax	505A	Technoflug	KS1C-158-R-108	D
NIMB	Schempp-Hirth	NIMBUS-4M	800	Solo	2625-02	Technoflug	KS-1G-160 R-110	D
VENT	Schempp-Hirth	VENTUS bT	430	Solo	2350	Oeler	OE-FL 5.83/83	D
AS25	Schleicher	ASH 25E	750	Rotax	275	MT	MT 130 L95-1B	D
AS25	Schleicher	ASH 25M	790	Mid-West	MWAE50R	Technoflug	KS-1C-154-R110	D
AS26	Schleicher	ASH 26E	525	Mid-West	MWAE50R	Schleicher	ASF1-1/R153-92-N1	D
AS26	Schleicher	ASH 26E	526	Mid-West	MWAE50R	Technoflug	KS 1C 154 R 108	D
AS31	Schleicher	ASH 31 Mi	700	Austro Eng.	IAE 50R-AA	Schleicher	ASF2F1-1/R153-92-N1	D
AS14	Schleicher	ASK 14	360	Hirth	F10K 1A	Hoffmann	HO-V42-48-02	D
AS16	Schleicher	ASK 16	750	Limbach	L 2000 EB1	Hoffmann	HO-V62-R-160-BT	D
AS22	Schleicher	ASW 22BE	810	Rotax	505A	Karais	KS-1C-158-R-108	D
AS24	Schleicher	ASW 24 TOP	415	F+E	F+E TOP (SC430)	Fischer	F+E Top 1.3m	D
AS27	Schleicher	ASW 27-18E	600	Solo	2350	Schleicher	AS2F1-2/L120-43-N2	C
AS28	Schleicher	ASW 28-18E	575	Solo	2350	Schleicher	AS2F1-2/L120-43N2	C
S900	Sipa	903	670	Continental	C-90-14F	Evra	D11-28-1B	C
HUSK	Sky Int	Aviat Husky A-1	816	Lycoming	O-360-A1P	Hartzell	HC-C2YK-1BF/F7666A-4	D
HUSK	Sky Int	Aviat Husky A-1	816	Lycoming	O-360-C1G	Hartzell	HC-C2YK-1BF/F7666A-4	D
HUSK	Sky Int	Aviat Husky A-1	816	Lycoming	O-360-A1P	MT	MTV-15-B/210-58	C
HUSK	Sky Int	Aviat Husky A-1B	907	Lycoming	O-360-A1P	Hartzell	HC-C2YK-1BF/F7666A	D
FOX	Skyfox Av	CA-25N	520	BRP - Rotax	Rotax 912 A	Allsize	CHP1-1	B
SV4	SNCAN	STAMPE SV4A	770	Renault	4P05	Hoffmann	HO-34HM-L98S	A
MS23	Socata	235 E-D	1200	Lycoming	O-540-B4B5	Hartzell	HC-C2YK-1BF/8468A-4	B
MS31	Socata	MS 317	1100	Continental	W670-6A	Evra	120-55-B7	C
F156	Socata	MS 505	1590	Jacobs	R-755A2	Evra	130-38-29	D
F156	Socata	MS 505	1590	Lycoming	O-540-E4B5	Hartzell	HC-C2YK-1BF	C

ICAO Code	Aircraft manufacturer	Aircraft type	MTOW in kg	Engine manufacturer	Engine type	Propeller manufacturer	Propeller type	Noise class
MS73	Socata	MS 733	1800	Potez	6D02	Hartzell	HC-B3Z22-7	C
RALL	Socata	MS 883	825	Lycoming	O-235-C2A	Sensenich	76AKS6-2-44	C
RALL	Socata	MS 893A	1050	Lycoming	O-360-A1A	Hartzell	HC-C2YK-1BF/7666-A2	B
TOBA	Socata	TB 10	1150	Lycoming	O-360-A1AD	Hartzell	HC-C2YR-1BF/F7666A-2	C
TRIN	Socata	TB 20	1335	Lycoming	IO-540-C4D5	Hartzell	HC-C2YK-1BF/F8477-4	D
TOBA	Socata	TB 200	1150	Lycoming	IO-360-A1B6	Hartzell	HC-C2YK-1BF/F7666A-2	D
TBM7	Socata	TBM 700	2984	P&W	PT6A-64	Hartzell	HC-E4N-3/E9083 S(K)	D
TBM7	Socata	TBM 700 C2	3354	P&W	PT6A-64	Hartzell	HC-E4N-3/E9083 S(K)	D
TBM7	Socata	TBM 700 N	3354	P&W	PT6A-66D	Hartzell	HC-E4N-3/E9083S (K)	D
RS18	Sportavia	RS 180	1100	Lycoming	O-360-A3A	Hoffmann	HO-27HM-180-138	D
S10S	Stemme	S10	850	Limbach	L 2400 EB1	Stemme	10 AP-N	D
S10S	Stemme	S10-V	850	Limbach	L 2400 EB 1.AD	Stemme	10 AP-F	D
S10S	Stemme	S10-V	850	Limbach	L 2400 EB 1.AD	Stemme	10 AP-V	B
S10S	Stemme	S10-VT	850	Rotax	914F2/S1	Stemme	11AP-V/20038/0796	D
TBEE	STOL Aircraft.	UC-1 TWIN BEE	1724	Lycoming	IO-360-B1D	Hartzell	HC-C2YK-2RB/7666A-2	D
GY20	Sud Aviation	GY-20	485	Continental	A-65	Merville	693 B	C
AA1	True Flight	AA-1A	680	Lycoming	O-235-C2C	McCaughey	1A105/SCM7154	C
AA5	True Flight	AA-5A	999	Lycoming	O-320-E2G	McCaughey	1C172/(S)BTM7359	B
AA5	True Flight	AA-5B	1090	Lycoming	O-360-A4K	McCaughey	1A170/FFA7563	B
AA5	True Flight	AA-5B	1089	Lycoming	O-360-A4K	Sensenich	76EM8S10-0-63	C
PKAN	Uetz	U3M PELIKAN	870	Lycoming	O-290-D2B	Sensenich	M74DM56	B
PKAN	Uetz	U4M PELIKAN	999	Lycoming	IO-320-B1A	Hoffmann	HO-V72L2/180DU	A
PKAN	Uetz	U4M PELIKAN	1000	Lycoming	O-320-A2B	McCaughey	1C172/MGM7460	A
KIWI	Valentin	KIWI	385	F+E	F+E TOP (SC430)	Fischer	F+E Top 1.3m	D
VTOR	Vulcanair	AP68TP 600	3000	Allison	250-B17C	Hartzell	HC-B3TF-7A/T10173FN-21R	D
WACF	Waco Classic.	YMF Model F5C	1338	Jacobs	R755-B2M	Sensenich	W96JB-4-68	C
WA42	Wassmer	4/21	1410	Lycoming	IO-540-C4B5	Hartzell	HC-C2YK-1BF/8477B-4	D
WA40	Wassmer	WA 40	1200	Lycoming	O-360-A1A	McCaughey	2D36C14	D
YK55	Yakovlev	YAK-55M	965	Vedeneyev	M-14P	MT	MTV-9K-C/CL250-29	C

This listing contains basic aircraft types. Aircraft which have been re-equipped to reduce noise can be classified, when evidence is shown, into a lower noise class. For Swiss aircraft, the Swiss Aircraft Register classification is applicable.

Cette liste contient les types de base d'aéronefs. Les aéronefs qui ont été réadaptés pour diminuer le bruit peuvent être classés, après justification, dans une catégorie de bruit inférieure. Pour les aéronefs suisses, la classification du Registre suisse des aéronefs est applicable.

Diese Liste enthält Basis-Flugzeugtypen. Flugzeuge, welche lärmindernd umgerüstet worden sind, können auf Nachweis hin in eine tiefere Lärmklasse eingestuft werden. Für schweizerische Luftfahrzeuge ist die Klassierung im Luftfahrzeugregister massgebend.

Questa lista elenca i tipi di base degli aeromobili. Gli aeromobili che sono stati rimodernati per diminuire il rumore possono venire classificati, secondo la giustificazione, in una categoria di rumore inferiore. Per gli aeromobili svizzeri è applicabile la classificazione della matricola svizzera degli aeromobili.

1. HELIKOPTERFLUGPLÄTZE	1. HELIPORTS	1. ELIPORTI	1. HELIPORTS
<p>1. Äussere Merkmale, Befeuerung, Bodendienste und lärmempfindliche Gebiete → HEL-Karte und/oder AD INFO Benützungseinschränkungen → Betriebsreglement und/oder AD INFO</p> <p>Caractéristiques physiques, feux, services au sol et zones sensibles au bruit → Carte HEL et/ou AD INFO Restrictions d'utilisation → Règlement d'exploitation et/ou AD INFO</p> <p>Caratteristiche fisiche, luci, servizi a terra e zone sensibili al rumore → Carta HEL e/o AD INFO Restrizioni d'utilizzazione → Norme OPS dell'aerodromo e/o AD INFO</p> <p>Physical characteristics, lights, ground services and noise-sensitive areas → HEL chart and/or AD INFO Restrictions of use → AD OPS regulations and/or AD INFO</p> <p>2. HEL AD „R“ = Ausser für Rettungseinsätze ist die Benützung des Flugfeldes durch Dritte grundsätzlich untersagt</p> <p>L'utilisation de l'héliport par des tiers est interdite par principe à l'exception des vols de sauvetage</p> <p>Ad'eccezione dei voli SAR, per principio l'uso dell'eliporto è vietato per i terzi</p> <p>Except for rescue flights the use of the heliport by third persons is basically prohibited</p>			
Name Nom Nome Ortskennung / Indicateur Indicatore / Indicator	Lage Situation Ubicazione Location	ELEV m	Halter und Betriebszeiten Exploitant et heures d'ouverture Esercente e orario di servizio Operator and AD operating hours
a	b COORD WGS84	c	d
BALZERS/FL LSXB Privat/Private AD	47 04 05 N 009 28 52 E 2 km W Balzers/FL	483	Heliport Balzers AG Schifflande 2 FL-9496 Balzers TEL +423 380 03 03 FAX +423 380 03 04 e-mail: info@lsxb.li SUN+HOL: eingeschränkter Flugbetrieb/ restricted flight OPS
COLLOMBEY-MURAZ „R“ LSEC Privé/Private AD Karte/Chart → Bex LSGB VAC	46 16 07 N 006 57 35 E	391	Air Glaciers S.A. Trans-Heli S.A. Rue Pré du Pont 1868 Collombey TEL +41 (0) 24 473 70 70 FAX +41 (0) 24 73 70 71 e-mail: agcollombey@bluewin.ch HJ MAX 0800-2000 LT

Name Nom Nome Ortskennung / Indicateur Indicatore / Indicator	Lage Situation Ubicazione Location	ELEV m	Halter und Betriebszeiten Exploitant et heures d'ouverture Esercente e orario di servizio Operator and AD operating hours
a	b COORDWGS84	c	d
ERSTFELD „R“ LSXE Privat/Private AD	46 50 01 N 008 38 20 E	459	Haltergemeinschaft Swiss Helicopter Group AG / Schweizerische Rettungsflugwacht Rega Swiss Helikopter AG 6472 Erstfeld (Flugfeldleitung) TEL +41 (0) 41 882 00 50 Schweizerische Rettungsflugwacht Rega 6472 Erstfeld TEL +41 (0) 41 882 03 33
GAMPEL „R“ LSEG Privat/Private AD	46 18 36 N 007 43 30 E	626	Air Zermatt AG 3920 Zermatt TEL +41 (0) 27 570 70 70 e-Mail: raron@air-zermatt.ch
GOSSAU „R“ LSXO Privat/Private AD	47 24 20 N 009 17 25 E	657	REGA Schweizerische Rettungsflugwacht 8058 Zürich TEL +41 (0) 71 313 99 33 FAX +41 (0) 71 313 99 34
GSTEIGWILER LSXG Privat/Private AD	46 38 53 N 007 52 39 E	686	Swiss Helicopter AG 3814 Gsteigwiler TEL +41 (0) 33 828 90 00 HJ MAX 0700-1900 LT SUN+HOL CLSD
HALTIKON LSXN Privat/Private AD	47 05 25 N 008 24 53 E	540	Heliswiss International AG 6403 Küsnacht a.R. TEL +41 (0) 41 854 32 23 FAX +41 (0) 41 854 32 22
HOLZIKEN “R” LSXH Privat/Private AD	47 18 51 N 008 01 34 E	465	Rose Helicopter AG Bändlistrasse 6 5043 Holziken TEL +41 (0) 62 721 44 44 FAX +41 (0) 62 721 44 66 e-Mail: info@roseheli.ch Internet: http://www.roseheli.com
INTERLAKEN „R” LSXI Privat/Private AD	46 40 15 N 007 52 31 E	579	Rega Schweizerische Rettungsflugwacht Bönigstrasse 17 3812 Wilderswil TEL +41 (0) 33 828 90 30 FAX +41 (0) 33 828 90 39
LAUTERBRUNNEN LSXL Privat/Private AD	46 35 08 N 007 54 48 E 2 km SSE Lauterbrunnen	800	Gemeinde Lauterbrunnen Heliport 3822 Lauterbrunnen TEL +41 (0) 33 856 05 60 e-mail: agl@air-glaciers.ch HJ

Name Nom Nome Ortskennung / Indicateur Indicatore / Indicator	Lage Situation Ubicazione Location	ELEV m	Halter und Betriebszeiten Exploitant et heures d'ouverture Esercente e orario di servizio Operator and AD operating hours
a	b COORD WGS 84	c	d
LEYSIN LSEY Privé/Private AD	46 20 29 N 007 01 27 E	1234	Héli-Chablais SA 1854 Leysin TEL +41 (0) 24 494 34 34 +41 (0) 24 473 70 70 e-mail: leysin@air-glaciers.ch HJ MAX 0600-2000 LT SUN+HOL MAX 0800-2000 LT
PFAFFNAU „R“ LSXP Privat/Private AD	47 14 07 N 007 54 36 E	541	Heli Gotthard AG Brunnmatt 6264 Pfaffnau TEL +41 (0) 62 754 01 01 FAX +41 (0) 62 754 01 02
RARON LSER Privat/Private AD	46 18 05 N 007 49 58 E	639	Air Zermatt AG 3920 Zermatt TEL +41 (0) 27 570 70 70 e-Mail: raron@air-zermatt.ch 0700 LT-SS: für betriebseigene HEL / for operator-owned HEL 0800-1200, 1330-1800 LT: für auswärtige HEL / for visiting HEL
SAN VITTORE LSXV Privato/Private AD	46 13 56 N 009 05 23 E	261	Heli Rezia SA 6775 Ambri TEL +41 (0) 91 873 66 66 FAX +41 (0) 91 873 66 69 6534 San Vittore TEL +41 (0) 91 829 27 27 FAX +41 (0) 91 829 36 13 HJ MAX 0730-2000 LT
SCHATTENHALB LSXC Privat/Private AD	46 42 45 N 008 12 09 E	800	Berner Oberländer Helikopter AG BOHAG 3814 Gsteigwiler TEL +41 (0) 33 971 88 11 FAX +41 (0) 33 971 88 10 No restrictions for SAR FLT
SCHINDELLEGI LSXS Privat/Private AD	47 10 13 N 008 42 51 E	792	FUCHS-Helikopter 8834 Schindellegi TEL +41 (0) 44 787 05 05 FAX +41 (0) 44 787 05 19
TAVANASA LSXA Privat/Private AD	46 45 38 N 009 05 34 E	750	Air Grischa Helikopter AG Heliport 7204 Untervaz TEL +41 (0) 81 322 57 57 FAX +41 (0) 81 322 50 00 7162 Tavanasa TEL +41 (0) 81 936 22 22 FAX +41 (0) 81 936 22 21
TROGEN „R“ LSXT Privat/Private AD	47 24 32 N 009 28 23 E	811	Helimission 9043 Trogen TEL +41 (0) 71 343 71 71 FAX +41 (0) 71 343 71 70

Name Nom Nome Ortskennung / Indicateur Indicatore / Indicator	Lage Situation Ubicazione Location	ELEV m	Halter und Betriebszeiten Exploitant et heures d'ouverture Esercente e orario di servizio Operator and AD operating hours
a	b COORDWGS84	c	d
UNTERVAZ LSXU Privat/Private AD PPR	46 54 44 N 009 33 04 E 2,5 km SSW Zizers	539	Air Grischa Helikopter AG 7204 Untervaz TEL +41 (0) 81 322 57 57/58 FAX +41 (0) 81 322 50 00 e-mail: untervaz@swisshelicopter.ch Internet: www.swisshelicopter.ch MON-SAT: HJ MAX 0630 LT - HRH SUN+HOL: HJ MAX 0730 LT - HRH
WÜRENLINGEN „R“ LSXW Privat/Private AD	47 32 14 N 008 14 41 E	370	GRANELLA AG 5303 Würenlingen TEL +41 (0) 79 357 36 57
ZERMATT LSEZ Privat/Private AD PPR	46 01 46 N 007 45 12 E 600 m NNE Bhf/stn Zermatt	1619	Air Zermatt AG 3920 Zermatt TEL +41 (0) 27 570 70 70 e-mail: zermatt@air-zermatt.ch Internet: www.air-zermatt.ch 0700 LT-SS: für betriebseigene HEL / for operator-owned HEL 0800-1200, 1330-1800 LT: für auswärtige HEL / for visiting HEL

1. WINTERFLUGPLÄTZE
1. AERODROMI INVERNALI
1. AERODROMES D'HIVER
1. WINTER AERODROMES
Benützungsbedingungen:

- 1) Für jede Landung und für Anflüge ohne Landung ist im Einzelfall vorher die Erlaubnis des Flugplatzhalters einzuholen.
- 2) Der Pilot muss Träger der Erweiterung zum Führerausweis für Landungen im Gebirge sein.
- 3) Leistung und Ausrüstung des Luftfahrzeuges müssen den Anforderungen des Geländes entsprechen.
- 4) Die Landeflächen können nur bei genügender Schneedecke oder bei genügend tragfähiger Eisfläche angefliegen werden.

Condizioni d'uso:

- 1) Per ogni atterraggio e per ogni volo di avvicinamento senza atterraggio è necessario in ogni singolo caso il consenso anticipato dell'esercente dell'aerodromo.
- 2) Il pilota deve possedere l'estensione della licenza per l'atterraggio in montagna.
- 3) Prestazione ed equipaggiamento degli aeromobili debbono corrispondere alle esigenze del terreno.
- 4) Le superfici d'atterraggio non sono praticabili che al momento in cui lo strato di neve o la resistenza della superficie di ghiaccio sono sufficienti.

Conditions d'utilisation:

- 1) Pour l'atterrissage et pour les approches sans atterrissage, la permission de l'exploitant de l'aérodrome doit être demandée au préalable dans chaque cas.
- 2) Le pilot doit être titulaire d'une licence étendue aux atterrissages en montagne.
- 3) La performance et l'équipement de l'aéronef doivent correspondre aux exigences du terrain.
- 4) Aires praticables seulement lorsque la couche de neige ou la résistance de la surface de glace sont suffisantes.

Conditions of use:

- 1) For each landing, and for approaches without landing, prior permission from the AD OPR is required in each case.
- 2) The pilot must be in possession of a licence extended for landings in mountain areas.
- 3) ACFT performance and equipment shall be as required for the nature of the terrain.
- 4) Landing areas can only be approached if the snow cover or the strength of the ice sheet are sufficient.

AD	PSN COORD WGS84	ELEV m	RWY MAG	RWY m	OPR / TEL / TELEX / RMK
1	2	3	4	5	6
BLUMENTAL LSWB	46 33 47 N 007 52 27 E (633 395 / 156 945) * Mürrenberg	1900	09 27	250 x 100 SLOPE: 28%	Gemeinde Lauterbrunnen Von Allmen Lorenz 3825 Mürren TEL +41 (0) 79 311 01 48 Benützungsbedingungen/Conditions d'utilisation/ Condizioni d'uso/Conditions of use: 1), 2), 3), 4) 1200-1330 LT: nur eine Bewegung gestattet/un seul mouvement admis/solo una rotazione ammessa/one movement only admitted SUN/HOL: für Schulfüge MAX 6 Bewegungen gestattet/pour vols d'école MAX 6 mouvements admis/per voli di scuola MAX 6 rotazioni ammesse/MAX 6 movements admitted for school flights * Landeskarte 1:50 000, Blatt 264 Carte nationale feuille
Helikopter- Landeplatz	46 33 48 N 007 52 46 E (633 800 / 156 990)				
GSTAAD-INN GRUND LSEA	46 25 45 N 007 16 15 E (587 130 / 141 985) *	1085			Swiss Helikopter AG 3123 Belp TEL +41 (0) 33 755 13 21 E-Mail:gstaad@swishshelicopter.ch Benützungsbedingungen/Conditions d'utilisation/ Condizioni d'uso/Conditions of use: 1), 3) nur HEL zugelassen/seuls HEL admis/ unicamente HEL ammessi/HEL only admitted * Landeskarte 1:50 000, Blatt 263 Carte nationale feuille
Helikopter- Landeplatz					

AD	PSN COORD WGS84	ELEV m	RWY MAG	RWY m	OPR / TEL / TELEX / RMK
1	2	3	4	5	6
LAUBERHORN LSWL	46 35 02 N 007 57 00 E (639 200 / 159 300) *	2230			<p>Gemeinde Lauterbrunnen</p> <p>3822 Lauterbrunnen TEL +41 (0) 33 856 05 60 e-mail: agl@air-glaciers.ch</p> <p>Benützungsbedingungen/Conditions d'utilisation/ Condizioni d'uso/Conditions of use: 1), 2), 3) nur HEL zugelassen/seuls HEL admis/ unicamente HEL ammessi/HEL only admitted</p> <p>* Landeskarte 1:50 000, Blatt 254 Carte nationale feuille</p> <p>Während den internationalen Skirennen ist das Flugfeld vom Skigebiet durch Sicherheitsnetze abgesperrt und markiert. Für die übrige Zeit wird vom Flugfeldleiter auf Anfrage hin ein spezieller Landeplatz zugeteilt.</p> <p>Pendant les compétitions internationales de ski, le champ d'aviation est balisé et séparé du domaine skiable par des filets de sécurité. Le reste du temps, une place d'atterrissage spéciale est accordée sur demande par le responsable du champ d'aviation..</p> <p>Durante le gare internazionali di sci il campo d'aviazione è delimitato da reti di protezione e debitamente contrassegnato. Nel resto dell'anno il responsabile del campo d'aviazione attribuisce su richiesta un'area di atterraggio speciale.</p> <p>During the international ski races, the airfield will be marked and closed off from the ski area with safety nets. The rest of the time, a special landing area will be assigned by the head of the airfield on request.</p>
MÄNNLICHEN LSWM	46 36 38 N 007 56 30 E (638 540 / 162 265) *	2227			<p>Swiss Helicopter AG</p> <p>3814 Gsteigwiler TEL +41 (0) 33 828 90 00 FAX +41 (0) 33 828 90 10</p> <p>Benützungsbedingungen/Conditions d'utilisation/ Condizioni d'uso/Conditions of use: 1), 2), 3) nur HEL zugelassen/seuls HEL admis/ unicamente HEL ammessi/HEL only admitted</p> <p>* Landeskarte 1:50 000, Blatt 254 Carte nationale feuille</p>

SCHWARZSEE LSWS	46 39 58 N 007 16 59 E (588 100 / 168 300) *	1046	$\frac{04}{22}$	600 x 100 SLOPE: Horiz.	Aérodrome Régional Fribourg-Ecuvillens 1730 Ecuvillens TEL +41 (0) 26 411 12 14 FAX +41 (0) 26 411 35 35 Benützungsbedingungen/Conditions d'utilisation/ Condizioni d'uso/Conditions of use: 1), 4) * Landeskarte 1:50 000, Blatt 253 Carte nationale feuille
ST. MORITZ LSXM Helikopter- Landeplatz	46 28 44 N 009 49 27 E (783 170 / 150 290) *	1783			Swiss Helicopter AG, 7000 Chur Basis Samedan TEL +41 (0) 81 852 35 35 FAX +41 (0) 81 852 32 72 e-mail: samedan@swisshelicopter.ch Benützungsbedingungen/Conditions d'utilisation/ Condizioni d'uso/Conditions of use: 1), 2), 3) nur HEL zugelassen/seuls HEL admis/ unicamente HEL ammessi/HEL only admitted Benützung beschränkt auf die Zeit vom 15. Dezember bis 15. Mai./Utilisation imitée à la periode du 15 décembre au 15 mai./L'uso è limitato al periodo dal 15 dicembre al 15 maggio./ Use restricted to the period from December 15 to May 15. * Landeskarte 1:50 000, Blatt 268 Carte nationale feuille

Intentionally Left Blank

1. Gebirgslandeplätze:

Benützung der Gebirgslandeplätze (GLP) mit Flächenflugzeugen: Nur bei entsprechender Eignung des Gebirgslandeplatzes (es ist ausschliesslich die Kolonne links massgebend).

Benützung der Gebirgslandeplätze mit Helikopter: Der Ort der Aussenlandung darf, in einem vernünftigen Umkreis, der im Rahmen der Ortsumschreibung bis 400 m um die Koordinaten betragen kann, gewählt werden (Entscheid des Bundesrates vom 7. Mai 1980).

Bei An- und Abflügen sind die zu meidenden Gebiete zu beachten (siehe Karte AGA 3-3 APP 1.)

1. Places d'atterrissage en montagne:

Utilisation des places d'atterrissage en montagne (GLP) par des avions: Uniquement si la place s'y prête (seule la colonne à gauche est déterminante).

Utilisation des places d'atterrissage en montagne par des hélicoptères: Le lieu d'atterrissage peut être choisi à une distance raisonnable, soit un rayon pouvant aller jusqu'à 400 m du point déterminé par les coordonnées dans les limites de la description topographique (décision du Conseil fédéral du 7 mai 1980).

Pour l'approche et le départ, les zones à éviter doivent être respectées (voir la carte AGA 3-3 APP 1.)

1. Aree di atterraggio in montagna:

Utilizzazione delle aree di atterraggio in montagna (GLP) mediante aerei: unicamente se le aree sono idonee (è determinante soltanto la colonna di sinistra).

Utilizzazione delle aree di atterraggio in montagna mediante elicotteri: il luogo di atterraggio può essere scelto entro un raggio ragionevole, che può arrivare fino a 400 m dal punto determinato con le coordinate secondo la descrizione topografica (decisione del Consiglio federale del 7 maggio 1980).

Durante gli avvicinamenti e allontanamenti occorre fare attenzione alle zone che devono essere evitate (vedi carta AGA 3-3 APP 1.)

1. Mountain Landing Sites:

Utilisation of mountain landing sites (GLP) by fixed-wing aircraft: Only if the mountain airstrip (the column on the left is authoritative) is suitable.

Utilisation of the mountain airstrip by helicopters. The off-field landing location can be chosen to be within a reasonable distance, which can be within 400 m of the coordinates for the surrounding area (Federal Council decision dated 7 May 1980).

When landing or taking-off, areas that are to be avoided must be noted (see map AGA 3-3 APP 1.)

Nr./N°	GLP	Name / Nom / Nome		COORD: LV95 WGS84	Lage / Bemerkungen	Situation / Remarques	Ubicazione / Osservazione
01	LSYG	Gstellihorn	BE/VS	1132620.28 N / 2586379.52 E 46 20 41 N / 007 15 42 E	Sattel östlich Gipfel	Col à l'est du sommet	Colle a est della vetta
02							
03	LSYH	Susten Steingletscher	BE	1176024.71 N / 2675420.53 E 46 43 52 N / 008 25 31 E			
04	LSYK	Kanderfirn	BE	1148349.92 N / 2629919.80 E 46 29 09 N / 007 49 42 E	Westlich Mutthornhütte	A l'ouest de la cabane Mutthorn	A ovest della capanna Mutthorn
05	LSVP	Petersgrat	BE/VS	1146479.92 N / 2629939.79 E 46 28 08 N / 007 49 42 E	Firnplateau	Plateau du névé	Altopiano del nevaio
06							
07	LSVN	Staldenhorn	BE	1141800.22 N / 2584749.58 E 46 25 39 N / 007 14 25 E	Mulde	Dépression	Depressione
08	LSVS	Sustenlimmi	BE	1171424.72 N / 2675575.50 E 46 41 23 N / 008 25 36 E	Vorgipfel	Avant le sommet	Prima della cima
09	LSVW	Vordere Walig	BE	1138000.25 N / 2584799.56 E 46 23 35 N / 007 14 28 E	Gipfel	Sommet	Cima
10	LSVK	Glärnischfirn	GL	1206999.73 N / 2718000.68 E 47 00 13 N / 008 59 25 E	Firnmulde nur vom 1 NOV - 30 JUN	Dépression du névé seulement du 1 NOV - 30 JUN	Depressione del nevaio soltanto dal 1 NOV - 30 JUN
11	LSYI	Limmerenfirn	GL	1185519.66 N / 2716700.56 E 46 48 38 N / 008 58 04 E	Oberer Firnrand	Bord supérieur du névé	Bordo superiore del nevaio

Nr./N°	GLP	Name / Nom / Nome	COORD:	LV95 WGS84	Lage / Bemerkungen	Situation / Remarques	Ubicazione / Osservazione
12	LSVV	Vorabgletscher	GR/GL	1193349.65 N / 2730600.65 E 46 52 42 N / 009 09 07 E	Sattel	Replat	Sella
13	LSVD	Clariden-Hüffirn	UR/GL	1186649.55 N / 2710000.59 E 46 49 19 N / 008 52 49 E	Plateau nördlich Planurahütte	Plateau au nord de la cabane Planura	Altopiano a nord della capanna Planura
14	LSVJ	Alpe Foppa	TI	1108348.95 N / 2712400.27 E 46 07 02 N / 008 53 34 E	Nur im Einverständnis mit dem Kommandanten des Waffenplatzes Mte Ceneri	seulement avec accord du Commando de la place d'armes Mte Ceneri	unicamente d'intesa con il Comando della piazza d'armi Mte Ceneri
15	LSVE	Aeschhorn	VS	1100999.64 N / 2621099.31 E 46 03 37 N / 007 42 41 E	Sattel	Col	Colle
16	LSVF	Alphubel	VS	1100049.64 N / 2633774.38 E 46 03 04 N / 007 52 30 E	Südlich Alphubeljoch	Au sud du Alphubeljoch	A sud d'Alphubeljoch
17	LSVI	Arolla	VS	1095824.88 N / 2603549.21 E 46 00 50 N / 007 29 04 E			
18	LSYD	Bec de Nendaz	VS	1112150.15 N / 2587899.38 E 46 09 39 N / 007 16 55 E	Rücken Sommer-Gebirgslandeplatz für Flächenflugzeuge geöffnet vom 15. Mai bis 15. November	Revers Site d'atterrissage estivale en montagne pour avions ouvert du 15 mai au 15 novembre	Dorso Campo d'atterraggio estivo in montagna per aerei aperto dal 15 maggio al 15 novembre
19	LSYQ	Croix de Coeur	VS	1107800.07 N / 2584199.38 E 46 07 17 N / 007 14 03 E	Sattel	Col	Colle
20	LSYE	Ebnefluh	VS	1150849.75 N / 2639249.89 E 46 30 28 N / 007 57 00 E	Gratrücken	Revers de l'arête	Dorso del crinale
21	LSYY	Glacier du Brenay	VS	1092999.98 N / 2600919.16 E 45 59 19 N / 007 27 02 E	Unterhalb Pass	Au-dessous de col	Sotto di passo
22	LSYX	Glacier du Trient	VS	1093050.33 N / 2569299.11 E 45 59 18 N / 007 02 33 E	Firnrand	Bord du névé	Bordo del nevaio
23	LSYZ	Glacier de Tsanfleuron	VS	1129200.24 N / 2583299.60 E 46 18 50 N / 007 13 19 E	0,5 km NW Tour St. Martin	0,5 km NW Tour St-Martin	0,5 km NW Tour S. Martin
24	LSVG	Grimentz	VS	1113549.77 N / 2610299.42 E 46 10 24 N / 007 34 19 E			
25	LSYJ	Jungfraujoch	VS	1155299.77 E / 2642299.98 E 46 32 52 N / 007 59 25 E	Flacher Hang östlich Sphinxstollen	Replat à l'est de la galerie du Sphinx	Altopiano all'est della galleria dello Sphinx
26	LSYN	Langgletscher	VS	1144799.80 N / 2637199.79 E 46 27 13 N / 007 55 22 E	Untere Gletschermitte	Partie inférieure du glacier	Parte inferiore del ghiacciaio
27	LSVQ	Monte Rosa	VS	1087799.58 N / 2631999.17 E 45 56 28 N / 007 51 04 E			
28	LSYP	Petit Combin	VS	1092500.05 N / 2586624.13 E 45 59 02 N / 007 15 58 E	Gipfel	Sommet	Cima
29	LSYR	Rosa Blanche	VS	1101049.97 N / 2593499.36 E 46 03 39 N / 007 21 17 E	Grat südlich Gipfel	Arête au sud du sommet	Crinale a sud della cima
30	LSYT	Theodulgletscher	VS	1086999.75 N / 2621049.09 E 45 56 03 N / 007 42 36 E	Plateau	Plateau	Altopiano
31	LSYU	Unterthorn	VS	1096624.64 N / 2627799.27 E 46 01 14 N / 007 47 51 E	Südöstlich Seilbahnstation	Au-sud-est du téléphérique	A sud-est della teleferica
32	LSYW	Wildhorn	VS	1133675.18 N / 2593999.55 E 46 21 16 N / 007 21 38 E	Krete Westgipfel	Crête à l'ouest du sommet	Cresta a ovest della vetta
34	LSVC	Col des Mosses	VD	1138575.34 N / 2574024.50 E 46 23 53 N / 007 06 03 E			
35	LSYA	Alp Trida ¹⁾	GR	1207125.13 N / 2823325.93 E 46 58 39 N / 010 22 28 E	Talboden	Vallée	Valle
36	LSYC	Crap Sogn Gion	GR	1188874.67 N / 2735375.68 E 46 50 14 N / 009 12 48 E	Plateau nordwestlich Seilbahnstation	Plateau au nord-ouest de la station du funiculaire	Altopiano a nord-ovest della stazione della funicolare
37	LSYF	Fuorcla Chamuotsch ²⁾	GR	1152599.62 N / 2777600.96 E 46 30 04 N / 009 45 09 E	Sattel	Col	Sella
38	LSVH	Fuorcla Grischa ²⁾	GR	1154249.65 N / 2780250.94 E 46 30 55 N / 009 47 16 E	Buckel	Bosse	Gobba

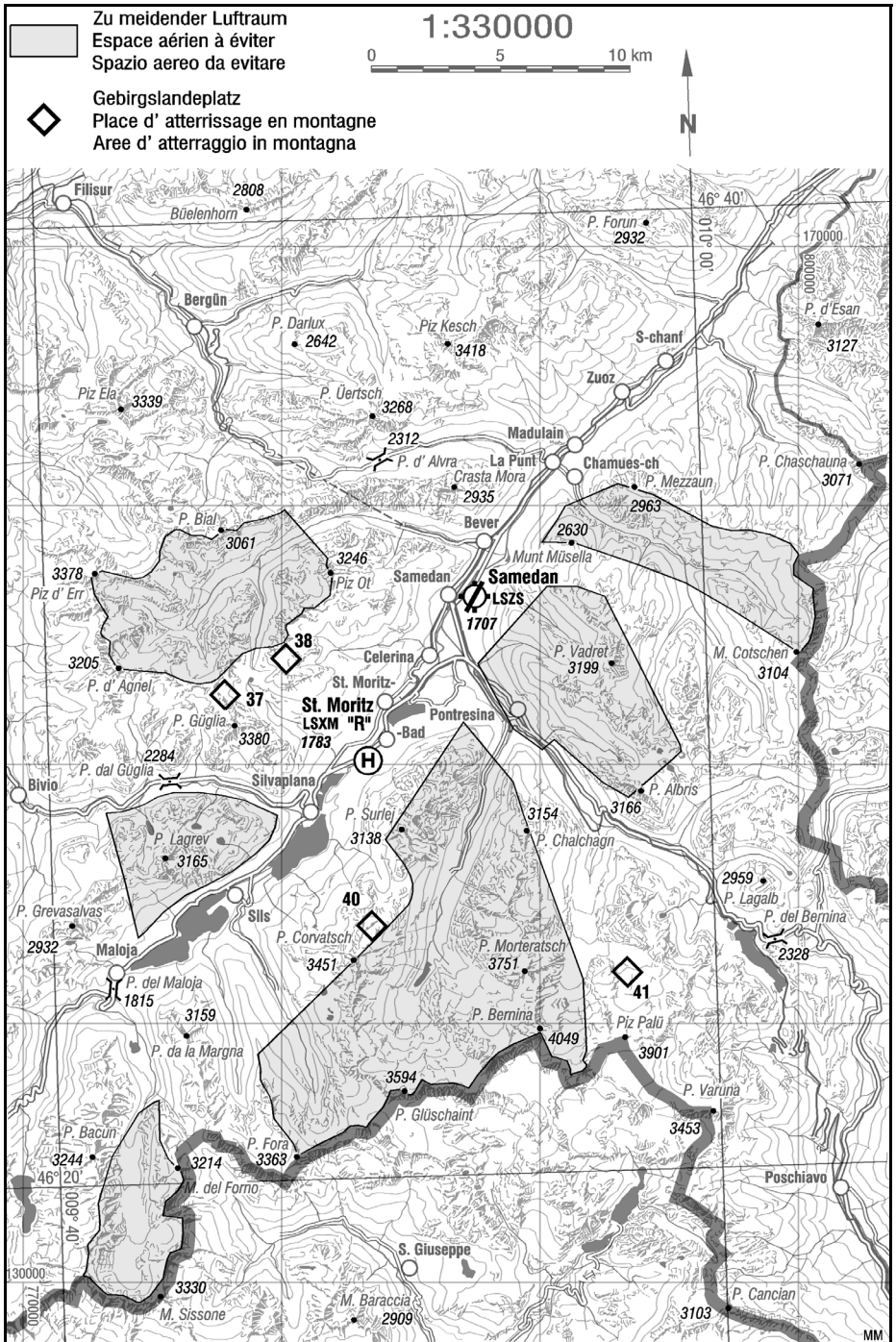
39	LSVO	Madrisahorn	GR	1200725.00 N / 2784800.80 E 46 55 55 N / 009 51 57 E	Sattel	Col	Sella
40	LSYV	Vadret dal Corvatsch ²⁾	GR	1143574.57 N / 2783376.07 E 46 25 06 N / 009 49 27 E	Gletschermulde	Dépression dans le glacier	Depressione del ghiacciaio
41	LSVR	Vadret Pers ²⁾	GR	1141524.64 N / 2792851.21 E 46 23 50 N / 009 56 48 E	nur für Flugzeuge	seulement pour avions	soltanto per aeroplani
42	LSYB	Blüemlisalp ³⁾	BE	1150859.90 N / 2625459.83 E 46 30 31 N / 007 46 13 E	nur für Ausbildung	à des fins d'instruction seulement	soltanto a scopi d'istruzione
43	LSVA	Arosa	GR	1182899.67 N / 2771500.80 E 46 46 31 N / 009 41 04 E	Bei ARA	Près „ARA“ (=STEP)	Presso „ARA“ (= IDA)

1)
Samnaun Customs Enclave
Zollausschlussgebiet Samnaun
Enclave douanière Samnaun
Enclave doganale estera Samnaun

2)
Not permitted to transport personnel for tourism purposes between 1 May and 31 October
zur Personenbeförderung zu touristischen Zwecken untersagt zwischen 1. Mai und 31. Oktober
le transport de personnes à des fins touristiques est interdite du 1er mai au 31 octobre
il trasporto di persone a scopi turistici è vietata dal 1 maggio al 31 ottobre

3)
The requirement whereby off-field landing must be within 400m of the designated coordinates does not apply in the case of the Blüemlisalp mountain landing site.
Die Beschränkung für die Aussenlandung im Umkreis von max. 400 m um die bezeichnete Koordinate gilt nicht für den Gebirgslandeplatz Blüemlisalp.
La restriction concernant le lieu d'atterrissage devant être situé dans un rayon de max. 400 m autour de la coordonnée publiée n'est pas applicable pour la place d'atterrissage en montagne Blüemlisalp.
L'obbligo di effettuare l'atterraggio esterno entro un raggio massimo di 400 m dal punto individuato dalle coordinate designate non si applica all'area d'atterraggio in montagna Blüemlisalp.

THIS PAGE INTENTIONALLY LEFT BLANK



THIS PAGE INTENTIONALLY LEFT BLANK

1. WASSERFLUGPLÄTZE
1. AERODROMI ACQUA

1. PLACES D'AMERRISSAGE
1. WATER AERODROMES

Benützungsbedingungen:

Der Pilot muss Träger des Einzeleintrags für Wasserflugzeuge oder Amphibienflugzeuge sein.

Condizioni d'uso:

Il pilota deve possedere l'iscrizione individuale per gli idroplani o gli aerei anfibi.

Conditions d'utilisation:

Le pilot doit être titulaire d'une inscription individuelle pour les hydravions ou avions amphibies.

Conditions of use:

The pilot must be in possession of the single entry for seaplanes or amphibious aircraft.

AD	PSN COORD WGS84	ELEV m	RWY MAG	RWY m	OPR / TEL / TELEX / RMK
1	2	3	4	5	6
LACHEN LSPW	47 12 38 N 008 52 12 E	405	08 26	2500 x 100	<p>Lachen Sea Plane Base Ueli Diethelm 8808 Pfäffikon SZ TEL +41 (0) 55 420 20 90</p> <p>Benützungsbedingungen / Conditions d'utilisation / Condizioni per l'uso / Terms of use:</p> <p>PPR Betriebszeiten/Horaires de service /Orario di servizio/ Operating hours: MON-SUN: 0800-1200, 1400-1700 LT</p> <p>SUN: Nur in LSPW stationierte Flugzeuge SUN: Seulement avions basés à LSPW SUN: Di stanza solo in aerei LSPW SUN: In LSPW homebased aircraft only</p> <p>Geschlossen an folgenden Feiertagen: Karfreitag, Bettag /</p> <p>Fermée les jours fériés suivants: Vendredi saint, jour de jeûne /</p> <p>Chiuso nei giorni festivi seguenti: Venerdì santo, Digiuno federale /</p> <p>Closed on the following public holidays: Good Friday, Swiss Day of Prayer</p> <p>Keine Platzrunden an folgenden Tagen / Pas de tours de piste les jours suivants / Nessun circuito di guida nei giorni seguenti / No circuits on the following days: AUG 15, NOV 01</p> <p>Die Basis ist vom 1. Dezember bis 31. März geschlossen / La base est fermée du 1er décembre au 31 mars / La base è chiusa dal 1° dicembre al 31 marzo / The base is closed from DEC 01 until MAR 31</p>

Auf das Seebecken achten / Tenir compte du lac / Fare attenzione al lago / Be aware of the lake basin.

Gesetzliche Abstände zu Kursschiffen (grüne Kugel), Berufsfischer (gelbe Kugel) und Schleppfischer (weisse Kugel) sind einzuhalten.

Il faut respecter les distances légales par rapport aux bateaux de ligne (sphère verte), aux pêcheurs professionnels (sphère jaune) et aux pêcheurs à la traîne (sphère blanche).

È necessario rispettare le distanze a norma di legge da battelli in servizio regolare (sfera verde), pescatori professionisti (sfera gialla) e pescatori a strascico (sfera bianca).

Legal distances to scheduled boat services (green ball), professional fishermen (yellow ball) and trolling (white ball), must be complied with.

Landeskarte / Carte nationale / Carta nazionale / National map 1:50 000
Blatt / page / foglio / sheet 236

Intentionally Left Blank

1

Conversion Table / Umrechnungstabelle / Table de conversion / Tabella di conversione

Dimension	SI Unit	US Unit	Conversion
Length	mm - millimeter	in - inch	1 in = 25.4 mm
	m - meter	ft - feet	1 ft = 0.3048 m
	km - kilometer	NM - Nautical Mile	1 NM = 1.852 km
Volume	l - liter	US gal - Gallons	1 gal = 3.7854 l
		qts - quarts	1 qts = 0.9464 l
Speed	km/h - kilometer per hour	kts - knots	1 kts = 1.852 km/h
	m/s - meter per second	fpm - feet per minute	1 m/s = 196.85 fpm
Mass	kg - kilogram	lbs - pound	1 kg = 2.2046 lbs
Force, Weight	N - Newton	lbf - poundforce	1 N = 0.2248 lbf
Pressure	hPa - hectopascal	inHG - inches of mercury	1 inHG = 33.86 hPa
	bar - bars	psi pounds per square inch	1 bar = 14.504 psi
Temperature	°C - degrees Celsius	°F - degrees Fahrenheit	°C * 1.8 +32 =°F
			(°F-32) / 1.8 = °C

Intentionally Left Blank

1

METEOROLOGY

The following daily weather forecasts are issued for **visual flight traffic**:

- Aviation weather forecast
- Low-Level SWC Alps, W/T-Chart, Wind Barbs, QNH-Chart
- GAFOR
- Glider forecast

In addition, there are the internationally standardised aviation weather products according to ICAO, which have important significance for visual flight traffic.

- METAR/TAF
- AIRMET
- SIGMET
- SWC, Wind and Temperature Charts

2

Aviation weather forecast

Issued at	Validity
0500 UTC	0600-1200 UTC
1100 UTC	1200-1800 UTC

The aviation weather forecast provides information about:

- General weather situation;
- Clouds, visibility and weather in the climatologically related regions of Switzerland;
- Wind and temperature north of the Alps for selected heights up to 16,000 m. tropopause, wind maximum (only if 60 kt or more), and zero-degree isotherms;
- Dangers;
- Outlook until midnight;
- Forecast wind and temperature for Payerne, Lugano and Zurich at 0900 UTC and 1500 UTC, and/or 1200 UTC and 1800 UTC;
- Three-day weather forecast.

3

Low-Level SWC Alps, W/T Chart, Wind Barbs, QNH Chart

3.1

Low-Level SWC Alps

The low level SWC (Significant Weather Chart) Alps is a forecast chart for the FIR Switzerland and FIR Vienna as well as the neighbouring areas and stretches from the surface of the earth up to FL 250. It is issued every 4 hours and provides information about weather phenomena that could have an impact on the safety of flights in the lower airspace. The Low-Level SWC includes all weather phenomena, which obliges an AIRMET to be issued. For this reason no AIRMET are issued in Switzerland (exception see chapter 5 "AIRMET"). Should the situation change significantly in the FIR Switzerland and FIR Vienna between the issuing times, an amended Low-Level SWC will be published. Outside these two FIR the chart is for information purposes only. Thus the official national products must be used in addition

The Low-Level SWC is enhanced by upper wind charts (W/T Chart, Wind Barbs) and pressure charts (QNH Chart).

The Low-Level SWC comprises:

- A header with the time of validity for the graphical content ("CHART VALID AT"), the time of the forecast for the text element in the lower right corner ("OUTLOOK VALID TILL") and the time of issue ("ISSUED AT"). If the chart was amended, this can be seen by the text "AMD DUE TO" and a description of the amendment;
- A topographical chart showing the national borders,
- The significant weather is indicated using internationally recognised symbols, specified abbreviations, numbers and meteorological and geographical terminology in accordance with the valid version of the ICAO Annex 3, Appendix 1-12 "SHEET OF NOTATIONS USED IN FLIGHT DOCUMENTATION". A detailed explanation can also be found in the brochure "Flugwetterinformationen in der Schweiz" (Aviation Meteorological Information for Switzerland, not available in English) (<https://www.meteoswiss.admin.ch/services-and-publications/service/weather-and-climate-products/aviation-weather.html>);
- Two text fields in the lower right corner with the forecast for the western and eastern parts of the chart ("OUTLOOK WEST", "OUTLOOK EAST").

The outlook represents the 4 hours following the time of validity.

The following weather information is forecast in the Low Level SWC:

- Surface pressure centres and fronts together with their tracking;
- Inclement weather areas with dense or closed cloud cover, widespread poor visibility and widespread precipitation;
- High convective clouds and other cloud formations below FL250 with the amount, type and lower and upper ceilings. Additional information if the mountains are covered by clouds;
- Prevailing visibility near the ground below 3000 ft AMSL;
- Weather phenomena such as precipitation, poor visibility (fog, smog), thunderstorms;
- Special weather hazards for aviation such as icing, turbulence and lee waves
- Strong wind zones near the ground below 3000 ft AMSL;
- Special terminology to better describe the affected area (mountains, valleys) but also regional weather phenomena such as southerly föhn.

It should be noted that the phenomena can only be represented on the chart if they have a specific expanse. The weather phenomena TS1 and CB/TCU already include MOD/SEV ICE and MOD/SEV TURB and CB, as well as low-level wind shear. Thus these phenomena are not explained separately.

Cloud cover is specified in FEW (1-2/8), SCT (3-4/8), BKN (5-7/8) or OVC (8/8) Isolated convection clouds can occur (ISOL; less than 50% of the area is affected), occasionally (OCNL; between 50% and 75% of the area is affected) or widespread (FRQ; more than 75% of the area is affected). Moreover, that can be hidden linearly (SQL), by mist and smoke (OBSC) or embedded in layers of cloud (EMBD).

Every 4 hours two Low-Level SWC are issued, the first with a time of validity of +2 hours, the second for +6 hours from the time of publication. An outlook in text form for the following 4 hours for the western and the eastern parts of the area enhances the graphic where, overall, a period of 10 hours is illustrated.

All the abbreviations mentioned here are explained in the brochure "Flugwetterinformationen in der Schweiz" (Aviation Meteorological Information for Switzerland, not available in English) (<https://www.meteoswiss.admin.ch/services-and-publications/service/weather-and-climate-products/aviation-weather.html>).

Times of validity Low-Level SWC Alps:		
Published	Validity	Outlook
0000 UTC	Chart 1: 0200 UTC	0200 - 0600 UTC
	Chart 2: 0600 UTC	0600 - 1000 UTC
0400 UTC	Chart 1: 0600 UTC	0600 - 1000 UTC
	Chart 2: 1000 UTC	1000 - 1400 UTC
0800 UTC	Chart 1: 1000 UTC	1000 - 1400 UTC
	Chart 2: 1400 UTC	1400 - 1800 UTC
1200 UTC	Chart 1: 1400 UTC	1400 - 1800 UTC
	Chart 2: 1800 UTC	1800 - 2200 UTC
1600 UTC	Chart 1: 1800 UTC	1800 - 2200 UTC
	Chart 2: 2200 UTC	2200 - 0200 UTC
2000 UTC	Chart 1: 2200 UTC	2200 - 0200 UTC
	Chart 2: 0200 UTC	0200 - 0600 UTC

The respective charts remain valid until the next publication time. The first is then cancelled and the second chart is replaced by a new, amended chart (with the same period of validity). This means that at any time two Low-Level SWC are available.

The Low-Level SWC supplementary charts are:

- High altitude wind charts (W/T Chart, Wind Barbs);
- Pressure charts (QNH Chart).

3.2

High Altitude Wind Charts (W/T Chart, Wind Barbs)

The W/T Chart contains the wind direction, wind speed and temperature in tabular form for different altitudes as well as the freezing level at various geographical points. The Wind Barbs show the same wind information in graphical form using wind arrows.

3.3

Pressure Charts (QNH Chart)

The QNH Chart displays pressure values (QNH) at different geographical points as well as the average wind and pressure differences between two selected points ("potential for Föhn").

The high altitude wind and pressure charts are updated twice a day and cover a time period of up to 27 hours.

Publication	Validity	Publication	Validity
0600-0800 UTC	Chart 1: 0600 UTC	1800-2200 UTC	Chart 1: 1800 UTC
	Chart 2: 0900 UTC		Chart 2: 2100 UTC
	Chart 3: 1200 UTC		Chart 3: 0000 UTC
	Chart 4: 1500 UTC		Chart 4: 0300 UTC
	Chart 5: 1800 UTC		Chart 5: 0600 UTC
	Chart 6: 2100 UTC		Chart 6: 0900 UTC
	Chart 7: 0000UTC		Chart 7: 1200 UTC
	Chart 8: 0300 UTC		Chart 8: 1500 UTC

Following a new model run. 8 W/T charts, 8 wind barbs and 8 QNH charts are available.

4

GAFOR

4.1

GAFOR

The GAFOR provides information about weather conditions (visibility/ceiling) for the main visual flight routes in Switzerland and is issued three times a day during the winter semester and four times a day during the summer semester:

Time of issuance (UTC)	Validity (UTC)	Time segments (UTC)		
0345 (during central European summer time CEST)	0400 - 1000	0400 - 0600	0600 - 0800	0800 - 1000
0545 (during regular central European time CET)*	0400 - 1000	/	0600 - 0800	0800 - 1000
0745	0800 - 1400	0800 - 1000	1000 - 1200	1200 - 1400
1145	1200 - 1800	1200 - 1400	1400 - 1600	1600 - 1800
1545 (during central European summer time CEST)*	1600 - 2200	1600 - 1800	1800 - 2000	/

* The formal period of validity of a GAFOR is always 6 hours to maintain the same code format (text version) and layout (chart version) throughout the day. For practical reasons the first 2 hours segment of the first GAFOR during regular time and the last 2 hours segment of the last GAFOR during summertime contain no weather information but only a "/". To provide the latest information available, the first GAFOR during regular time is published after the regular start of its validity period.

The GAFOR comprises the route identification and the forecast for visibility in kilometres as well for ceiling (ceiling of 5/8 and above). The conditions are forecasted in the form of classes (O/D/M/X) for each time segments. The definitive GAFOR class is defined by the least visibility and ceiling on the corresponding GAFOR route (incl. start and end point).

Weather categories				
Ceiling				
2000 ft	X	M	D	O Oskar / open
1500 ft	X	M	D	D Delta / difficult
1000 ft	X	M	M	M Mike / marginal
	X	X	X	X X-Ray / closed
	2 km	5 km	8 km	Visibility
Ceiling: Lowest cloud base of at least 5 oktas (BKN/OVC)				

O		Visibility ≥ 8 km	Ceiling ≥ 2000 ft
Oscar	Open	Visibility 8 km or more and ceiling 2000 ft or higher above the terrain.	
	Open	No weather-relevant obstacle for visual flight.	

D		8 km > Visibility ≥ 5 km	2000 ft > Ceiling ≥ 1500 ft
Delta	Difficult	Visibility less than 8 km, but at least 5 km; and/or ceiling below 2000 ft, but at least 1500 ft over the terrain.	
	Difficult	Trained pilots can still fly using visual navigation.	

M		5 km > Visibility ≥ 2 km	1500 ft > Ceiling ≥ 1000 ft
Mike	Critical	Visibility less than 5 km, but at least 2 km; and/or ceiling below 1500 ft, but at least 1000 ft over the terrain.	
	Marginal	Well-trained pilots with detailed knowledge of local conditions can still fly using visual navigation.	

X		Visibility < 2 km	Ceiling < 1000 ft
X-ray	Closed	Visibility below 2 km and/or ceiling below 1000 ft over the terrain.	
		Visual flight not possible.	

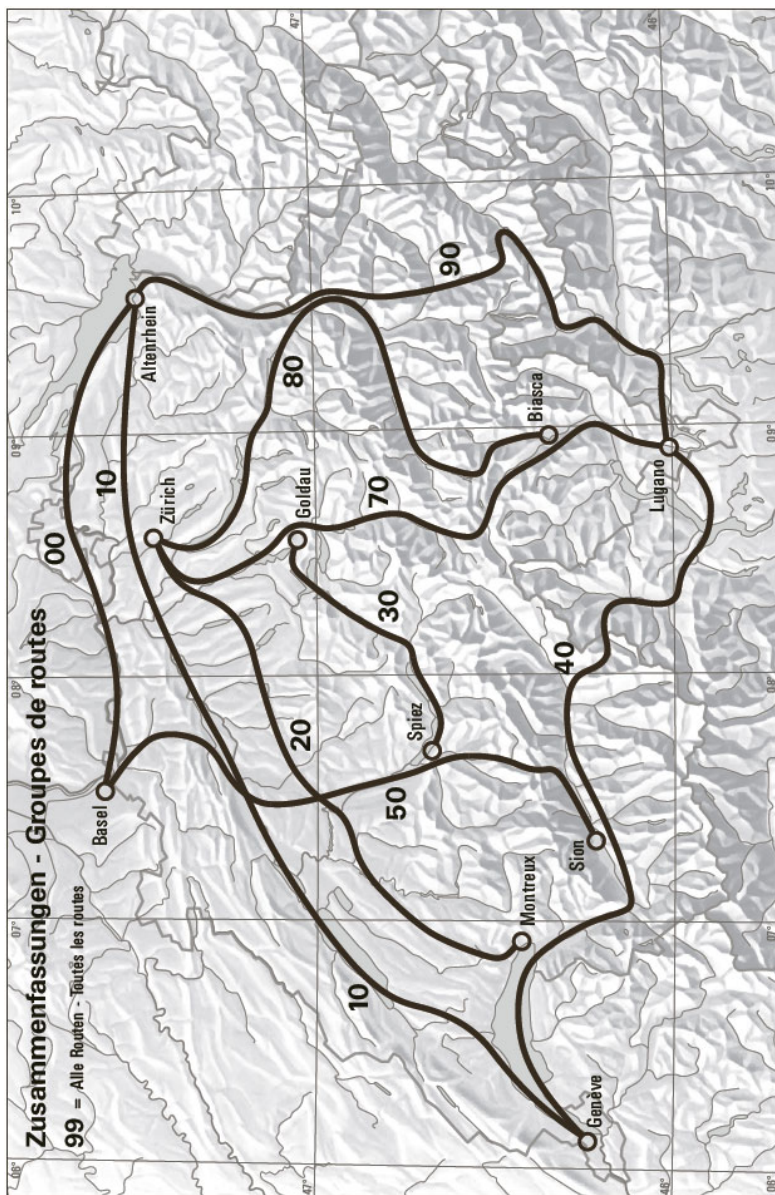
For all weather categories except "O", the meteorological reason for the reduction of visibility and/or the low ceiling is indicated by the most relevant phenomenon from the following table:

No.	Symbol	Phenomenon
1		Thunderstorm
2		Snow
3		Rain
4		Showers of Snow
5		Showers of Rain
6	LC	Low Clouds
7		Fog
8		Mist

Other weather phenomena hazardous to aviation, such as icing and turbulence are forecasted in the Low-Level SWC Alps or aviation weather forecast. They are not taken into account in GAFOR.

Flight routes

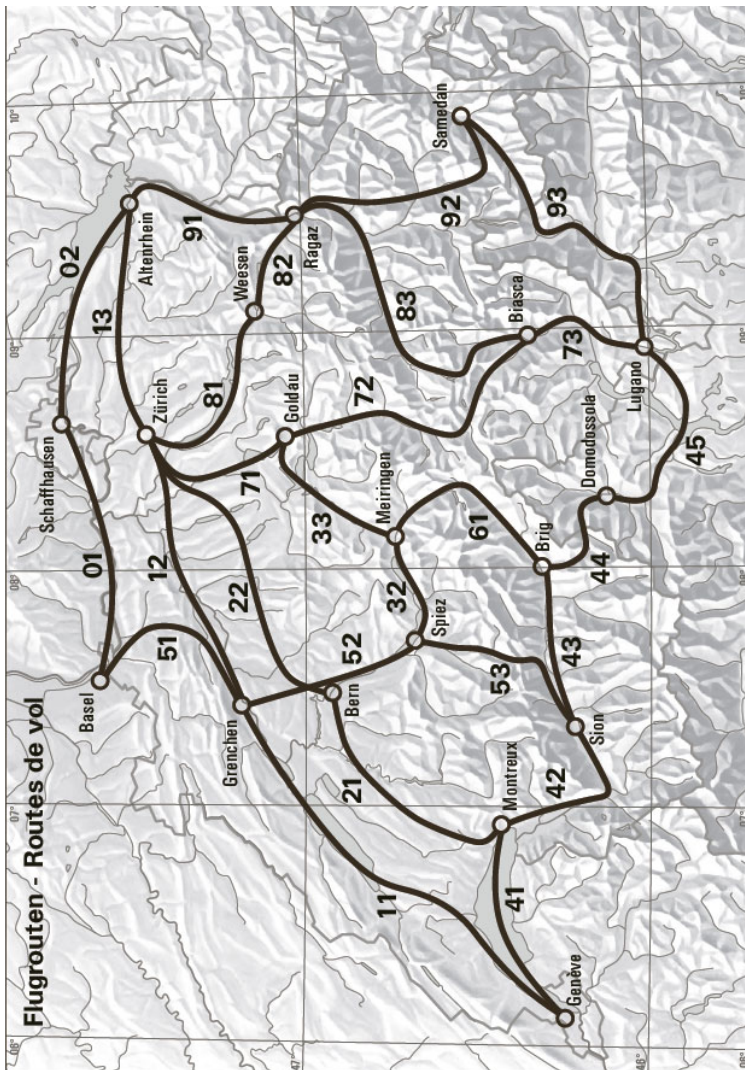
Summary of routes:



Flight routes		Reference height AMSL (highest point of a route)
00	Basel-Schaffhausen-Altenrhein	1600 ft
10	Genève-Grenchen-Zürich-Altenrhein	1900 ft
20	Montreux-Bern-Zürich	2900 ft
30	Spiez-Meiringen-Brünig-Goldau	3600 ft
40	Genève-Simplonpass-Domodossola-Lugano	6800 ft
50	Basel-Gemmipass-Sion	7700 ft
70	Zürich-Gotthardpass-Lugano	7200 ft
80	Zürich-Lukmanierpass-Biasca	6500 ft
90	Altenrhein-Julierpass-Malojapass-Lugano	7500 ft
99	All routes	7700 ft

Flight routes

Summary of routes:



Flight routes		Reference height AMSL (highest point of a route)
01	Basel-Schaffhausen	1600 ft
02	Schaffhausen-Altenrhein	1600 ft
11	Genève-Morges-Grenchen	1900 ft
12	Grenchen-Bremgarten-Zürich	1900 ft
13	Zürich-Attikon-Altenrhein	1900 ft
21	Montreux-Romont-Fribourg-Neuenegg-Bern	2900 ft
22	Bern-Moossee-Sursee-Bremgarten-Zürich	2900 ft
32	Spiez-Meiringen	1900 ft
33	Meiringen-Brünig-Küssnacht-Goldau	3600 ft
41	Genève-Montreux	1600 ft
42	Montreux-Sion	1600 ft
43	Sion-Brig	2300 ft
44	Brig-Simplonpass-Domodossola	6800 ft
45	Domodossola-Laveno-Lugano	1600 ft
51	Basel-Langenbruck-Grenchen	2600 ft
52	Grenchen-Bern-Spiez	1900 ft
53	Spiez-Gemmipass-Sion	7700 ft
61	Meiringen-Grimselfpass-Brig	7200 ft
71	Zürich-Bremgarten-Goldau	1900 ft
72	Goldau-Gotthardpass-Biasca	7200 ft
73	Biasca-Lugano	1900 ft
81	Zürich-Horgen-Weesen	1600 ft
82	Weesen-Ragaz	1600 ft
83	Ragaz-Lukmanierpass-Biasca	6500 ft
91	Altenrhein-Ragaz	1600 ft
92	Ragaz-Lenzerheide-Julierpass-Samedan	7500 ft
93	Samedan-Malojapass-Menaggio-Lugano	6200 ft

5

Glider flight forecast

The glider forecast provides information about the weather situation, wind and temperature forecast, freezing level, inversion, clouds, thermals, precipitation and visibility. It is published from April to September.

6

AIRMET

AIRMET publishes information in accordance with ICAO on weather phenomena posing a danger to flights between the ground and a defined height in the lower airspace, which has not already been issued in a forecast for low-level flights. AIRMET are only issued when the forecast phenomena are occurring or about to occur. The weather phenomena occurring in an AIRMET are described in the brochure "Flugwetterinformationen in der Schweiz" (Aviation Meteorological Information for Switzerland, not available in English) (<https://www.meteoswiss.admin.ch/services-and-publications/service/weather-and-climate-products/aviation-weather.html>).

In Switzerland phenomena worthy of an AIRMET are illustrated in the Low-Level SWC Alps, which are amended as necessary. For this reason no AIRMET are generally issued. Exceptions are technical shortcomings if the production of the Low-Level SWC should not be possible.

7

SIGMET

The SIGMET publishes information as required according to ICAO about phenomena posing a serious danger to flights in the entire FIR/UIR Switzerland.

In Switzerland warnings are issued for weather phenomena posing a serious danger to flights.

Thunderstorm	
obscured	OBSC TS
embedded	EMBD TS
frequent	FRQ TS
squall line	SQL TS
obscured with heavy hail	OBSC TS HVYGR
embedded with heavy hail	EMBD TS HVYGR
frequent with heavy hail	FRQ TS HVYGR
squall line with heavy hail	SQL TS HVYGR

Turbulence	
severe turbulence	SEV TURB

Icing	
severe icing	SEV ICE
severe icing due to freezing rain	SEV ICE (FZRA)

Mountain wave	
severe mountain wave	SEV MTW

There is also SIGMET for volcanic ash (VA) in the unlikely event that FIR/UIR Switzerland could be affected by transported ash.

The period of validity should not exceed 4 hours (but up to 6 hours is possible in the case of VA SIGMET).

How to obtain aviation weather services

Apart from the self-briefing stations (skybriefing and TAMSI) at the airports, the following possibilities are available for obtaining aviation weather services:

Telefon			
<i>Service</i>	<i>German</i>	<i>French</i>	<i>Price</i>
Personal advice: Engine-powered flight	0900 162 737	0900 162 767	CHF 2.90/min.
Personal advice: Balloons and Gliders	0900 162 333	0900 162 666	CHF 2.90/min.
Aviation weather forecast	0900 162 121	0900 162 151	CHF 1.20/min.
GAFOR	0900 162 120	0900 162 150	CHF 1.20/min.
Glider forecast (April-September)	0900 162 122	0900 162 152	CHF 1.20/min.

APP		
<i>Service</i>	<i>Address</i>	<i>Price</i>
Obtainable in the APP Store, Google Play and Windows Store.		Free of charge

Internet		
<i>Service</i>	<i>Website</i>	<i>Price</i>
Internet Briefing Alpine region and more	www.flugwetter.de	CHF 85.- / per year
Internet flight preparation	www.skybriefing.com	Depending on service and access time

WEATHER BROADCASTS								
<i>Name</i>	<i>Call sign</i>	<i>EM</i>	<i>FREQ MHz</i>	<i>Time</i>	<i>Times</i>	<i>Stations</i>	<i>Content</i>	<i>Remarks</i>
1	2	3	4	5	6	7	8	9
GENEVA	Geneva MET Broadcast	A3E	126.805	CNS	H24	Geneva Zurich Basle- Mulhouse Nice Lyon-Saint- Exupéry Paris -Charles- de-Gaulle Paris-Orly Milan-Linate Milan-Malpensa Bern ¹⁾	AERODROME ROUTINE WEATHER REPORT	Plain text - English VOLMET TEL no: +41 (0) 22 417 40 82 1) AUTO METARs outside AD's operating hours
ZURICH	Zurich MET Broadcast	A3E	127.205	CNS	H24	Zurich Geneva Basle- Mulhouse Frankfurt/Main Munich Stuttgart Milan-Linate Milan-Malpensa Lugano ¹⁾ Bern ¹⁾		Plain text - English VOLMET TEL No.: +41 (0) 43 931 60 71 1) AUTO METARs when AD is closed

SNOWTAM

The following Items are used for SNOWTAM reports:

Item	Information
Aeroplane performance calculation section	
A	Aerodrome location indicator
B	Date and time of assessment
C	Lower runway designation number
D	Runway Condition Code (RWYCC) on each runway third
E	Per cent coverage contaminant for each runway third
F	Depth of loose contaminant for each runway third (in mm)
G	Condition description (contaminant type) for each runway third
H	Width of runway to which the RWYCCs apply if less than published width (in meter)
Situational awareness section	
I	Reduced runway length if less than published length
J	Drifting snow on the runway
K	Loose sand on the runway
L	Chemical treatment on the runway
M	Snowbanks on the runway
N	Snowbanks on taxiway
O	Snowbanks adjacent to the runway
P	Taxiway conditions
R	Apron conditions
S	State-approved and published use of measured friction coefficient
T	Plain language remarks using only allowable characteristics in capital letters

THIS PAGE INTENTIONALLY LEFT BLANK