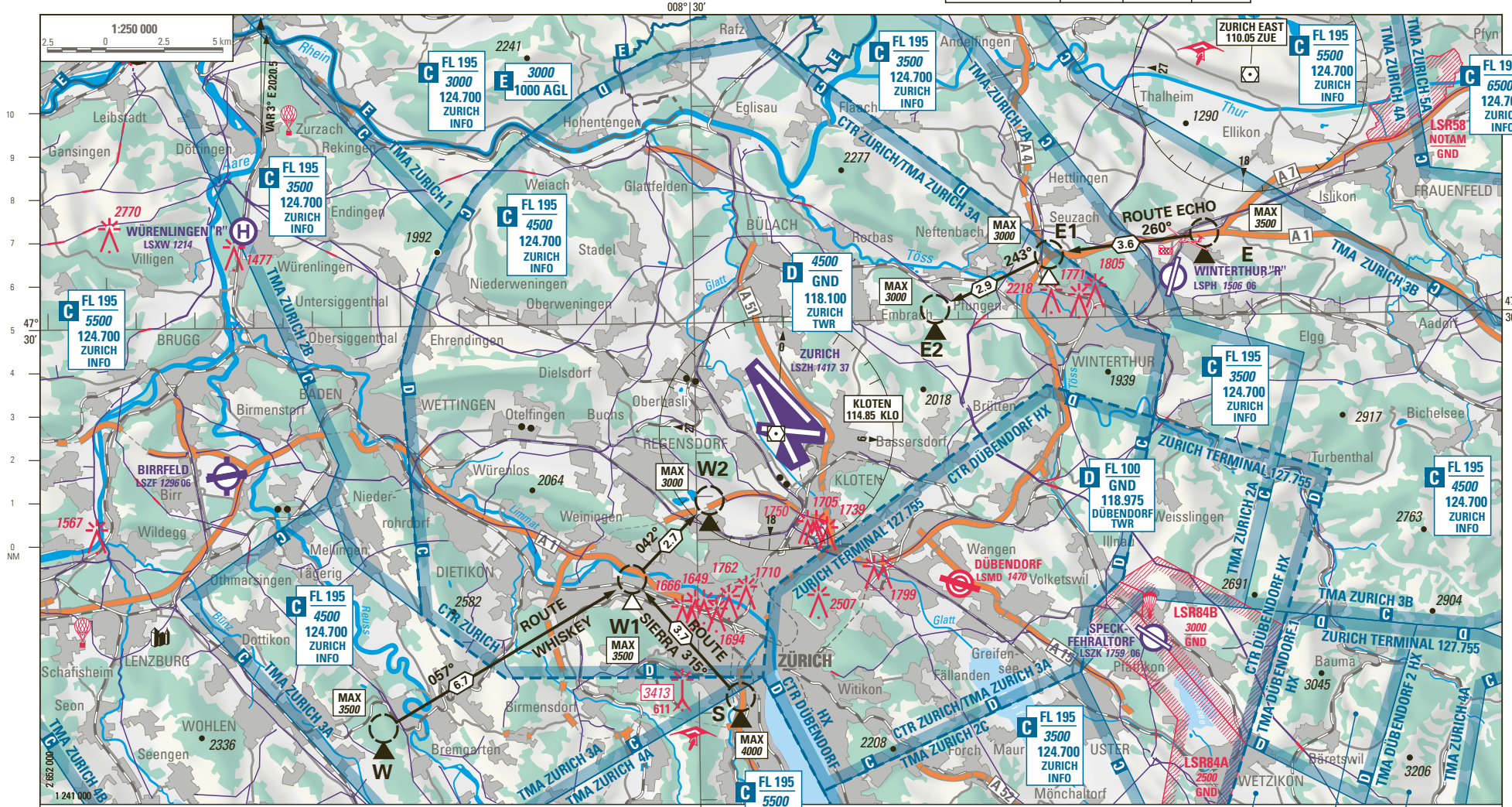


ATIS (VFR)	129.005	INFO	124.700
TERMINAL/VDF	127.755	VOLMET	127.205
TWR/VDF	118.100	119.700	



Funkverbindung mit TWR obligatorisch vor Erreichen der Meldepunkte W, E oder S
Radio contact compulsory prior reaching REP W, E or S

Anflugrouten / Arrival routes:
ROUTE ECHO: E - E1 - E2
ROUTE SIERRA: S - W1 - W2
ROUTE WHISKEY: W - W1 - W2

Transition level: by ATC

- W: 47° 20' 45" N / 008° 19' 16" E KLO R230 D11.3
- W1: 47° 24' 06" N / 008° 27' 46" E KLO R221 D4.7
- W2: 47° 25' 55" N / 008° 30' 26" E KLO R222 D2.2
- S: 47° 21' 22" N / 008° 31' 24" E KLO R184 D6.1
- E: 47° 31' 55" N / 008° 47' 24" E KLO R062 D10.9
- E1: 47° 31' 27" N / 008° 42' 06" E KLO R054 D7.5
- E2: 47° 30' 15" N / 008° 38' 12" E KLO R049 D4.7

- C FL 195 5500 124.700 ZÜRICH INFO
- D FL 100 3500 or 700 AGL 118.975 DÜBENDORF TWR
- D FL 100 5500 118.975 DÜBENDORF TWR