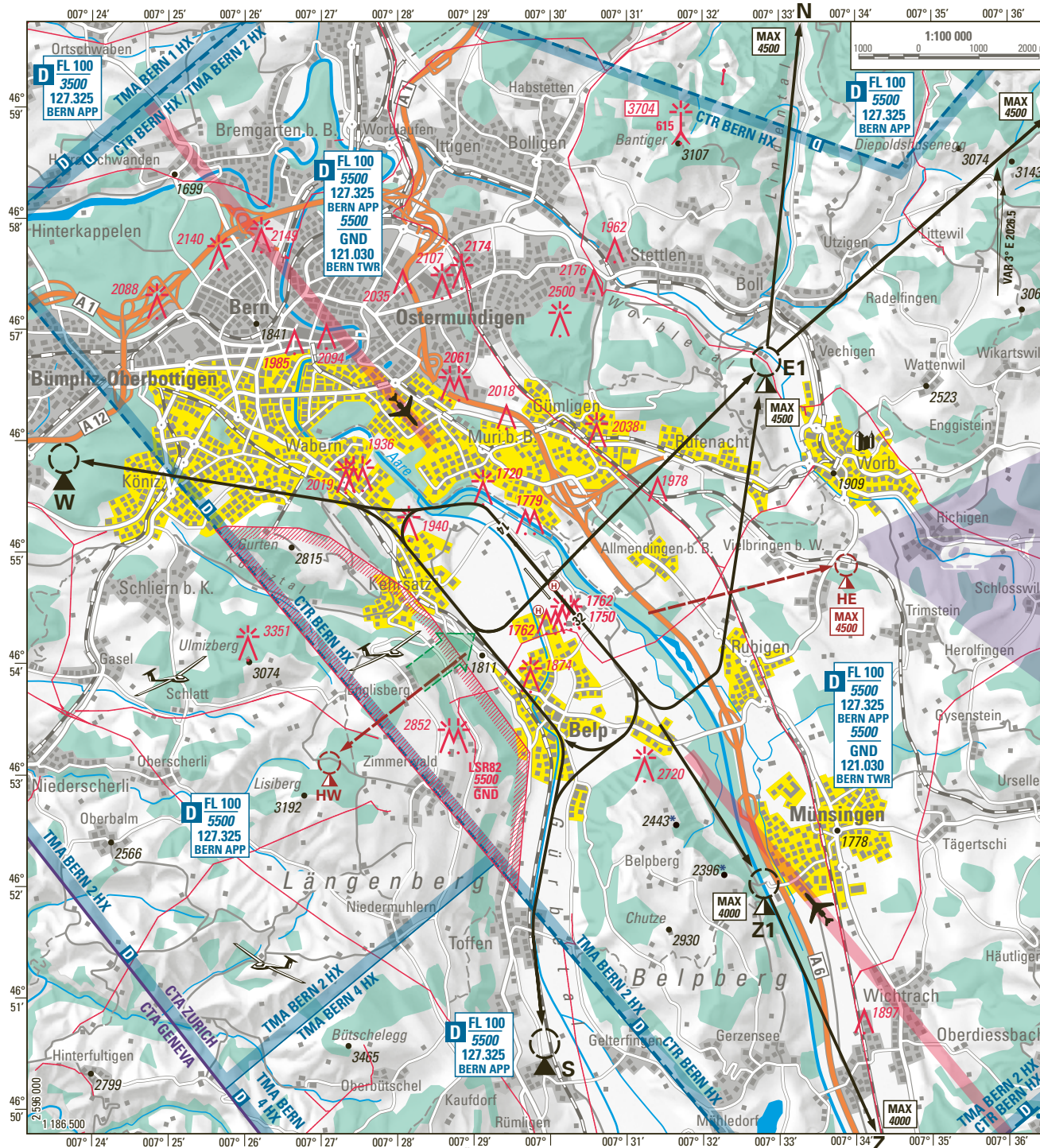


ATIS	125.130		
TWR	121.030	119.700	121.500
APP	127.325		



ATIS BERN abhören (ATIS Kennung bestätigen)
MNT BERN ATIS (confirm ATIS designator)

ARR / DEP LSZB: TMA BERN meiden
avoid TMA BERN
CTR BERN MAX 5500

Beim Anfordern der Rollfreigabe muss der vorgesehene Flugweg (z.B. ready for taxi Route ECHO) angegeben werden.

When ready for taxi transmit outbound route (e.g. ready for taxi Route ECHO).

Abflugrouten / Departure routes:

RWY 14:

- Route W: right downwind - W
- Route S: right crosswind - S
- Route Z (MAX 4000): Z1 - Z
- Route E (MAX 4500): crosswind - E1 - E
- Route N (MAX 4500): crosswind - E1 - N
- Route HE (MAX 4500): HEL VAC - HE - HEL Sector
- Route HW: HEL VAC - HW

RWY 32:

- Route W: crosswind - W
- Route S: downwind - S
- Route Z: not available
- Route E (MAX 4500): mid left downwind - overhead - E1 - E
- Route N (MAX 4500): mid left downwind - overhead - E1 - N
- Route HE (MAX 4500): HEL VAC - HE - HEL Sector
- Route HW: HEL VAC - HW

HEL ≤ 4 t MTOM: See ARR and DEP circuits on VAC HEL.

HEL > 4 t MTOM: Use VAC ARR and DEP for operations on the paved runway. Inform TWR on first call. Exceptions: Swiss Helicopter Maintenance.

Nur INBD obligatorisch
 Only INBD compulsory

LSR82 **Einflug verboten wenn aktiv (ATIS)**
Entering prohibited when ACT (ATIS)

Funkausfallverfahren: → LSZB AD INFO 12 § 1.6
RDO failure procedure:

IFR APCH

* **When ALS RWY 32 in use, red fixed LGT denoting hazardous terrain**

D FL 100
4000
or
1000 AGL
127.325
BERN APP
127.325
BERN APP
TMA BERN 3 HX