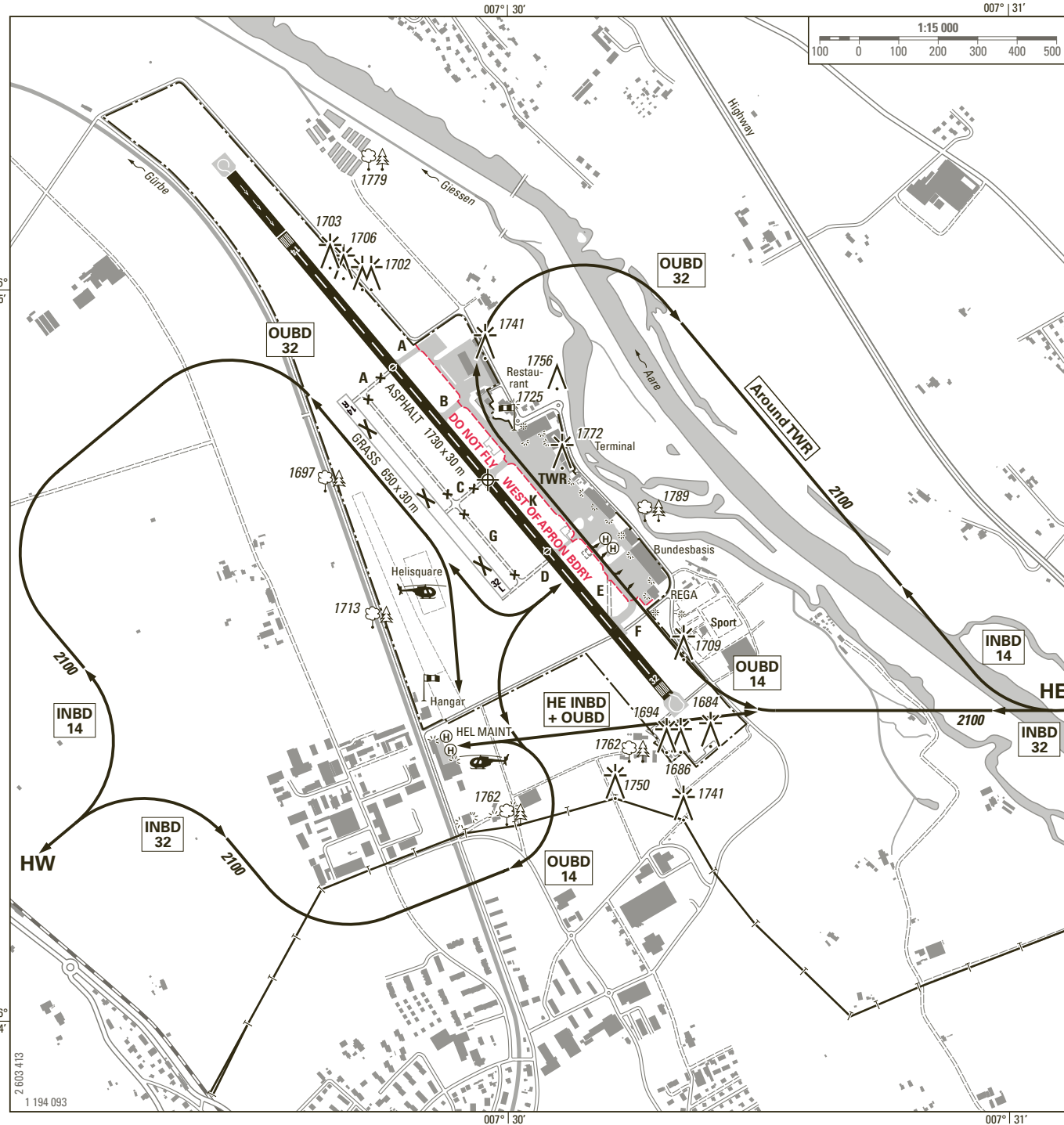


ATIS	125.130		
TWR	121.030	119.700	121.500
APP	127.325		

ELEV 1675 ft (511 m)



ATIS BERN abhören (ATIS Kennung bestätigen)
MNT BERN ATIS (confirm ATIS designator)

ARR and DEP circuits for HEL ≤ 4 t MTOM
HEL to / from HE: Do not fly west of the apron boundary when departing from or arriving to the main apron.

HEL > 4 t MTOM: Use VAC ARRIVAL and VAC DEPARTURE for operations on the paved runway. Inform TWR on first call.
Exceptions: Swiss Helicopter Maintenance (SW of AD site).

HE 46° 54' 53" N / 007° 33' 53" E
 HW 46° 53' 07" N / 007° 27' 07" E

ARR and DEP according RWY in use.

HEL ROUTES ARR
Route HW: HW - HEL VAC
Route HE (MAX 4500): HEL Sector - HE - (clearance limit HE)

HEL ROUTES DEP
Route HW: HEL VAC - HW
Route HE (MAX 4500): HEL VAC - HE - HEL Sector

Report leaving CTR.
When LSR82 active, ARR/DEP route HW not available.