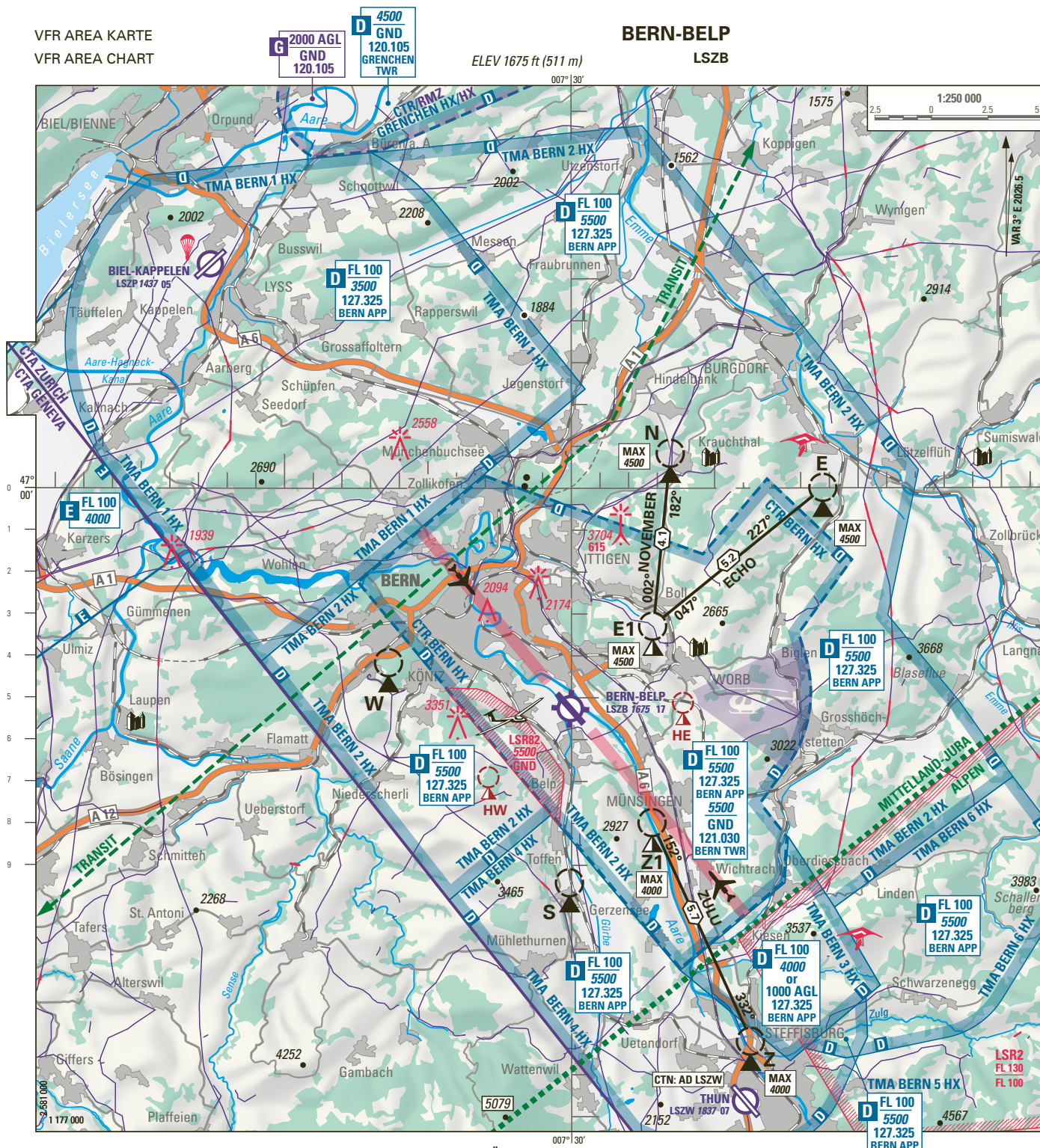


ATIS	125.130		
TWR	121.030	119.700	121.500
APP	127.325		

ELEV 1675 ft (511 m)



ATIS BERN abhören (ATIS Kennung bestätigen)
MNT BERN ATIS (confirm ATIS designator)

← → VFR TRANSIT ROUTE:
APP 127.325 > 5500
TWR 121.030 ≤ 5500

Erster Funkkontakt 5 min vor Einflug in CTR
First RDO contact 5 min prior CTR
Mit dem ersten Funkkontakt ist der vorgesehene Anflugweg zu melden (z.B. Route ECHO).
The intended routing (e.g. Route ECHO) shall be submitted with the first RDO contact.

Nur INBD obligatorisch
Only INBD compulsory

- N** 47° 00' 50" N / 007° 33' 27" E
- E** 47° 00' 01" N / 007° 38' 46" E
- E1** 46° 56' 43" N / 007° 32' 50" E
- Z** 46° 46' 48" N / 007° 36' 12" E
- Z1** 46° 52' 01" N / 007° 32' 48" E
- S** 46° 50' 35" N / 007° 29' 55" E
- W** 46° 55' 50" N / 007° 23' 38" E
- HE** 46° 54' 53" N / 007° 33' 53" E
- HW** 46° 53' 07" N / 007° 27' 07" E

MAX 4500

HEL ≤ 4 t MTOM: See ARR and DEP circuits on VAC HEL.
HEL > 4 t MTOM: Use VAC ARR and DEP for operations on the paved runway. Inform TWR on first call. Exceptions: Swiss Helicopter Maintenance.

LSR82 Einflug verboten wenn aktiv (ATIS)
Entering prohibited when ACT (ATIS)

Funkausfallverfahren: → LSZB AD INFO 12 §1.6
RDO failure procedure:

IFR APCH